

PHILIPPINE BIDDING DOCUMENTS

IB2023 – 098E

**PROCUREMENT OF PROPOSED
RENOVATION AND UPGRADING OF
ARSENIA J. MAXIMO SUPER HEALTH
CENTER**

ABC: P 9,790,164.44

Government of the Republic of the Philippines

**Sixth Edition
July 2020**

Preface

These Philippine Bidding Documents (PBDs) for the procurement of Infrastructure Projects (hereinafter referred to also as the “Works”) through Competitive Bidding have been prepared by the Government of the Philippines for use by all branches, agencies, departments, bureaus, offices, or instrumentalities of the government, including government-owned and/or -controlled corporations, government financial institutions, state universities and colleges, local government units, and autonomous regional government. The procedures and practices presented in this document have been developed through broad experience, and are for mandatory use in projects that are financed in whole or in part by the Government of the Philippines or any foreign government/foreign or international financing institution in accordance with the provisions of the 2016 revised Implementing Rules and Regulations (IRR) of Republic Act (RA) No. 9184.

The PBDs are intended as a model for admeasurements (unit prices or unit rates in a bill of quantities) types of contract, which are the most common in Works contracting.

The Bidding Documents shall clearly and adequately define, among others: (i) the objectives, scope, and expected outputs and/or results of the proposed contract; (ii) the eligibility requirements of Bidders; (iii) the expected contract duration; and (iv) the obligations, duties, and/or functions of the winning Bidder.

Care should be taken to check the relevance of the provisions of the PBDs against the requirements of the specific Works to be procured. If duplication of a subject is inevitable in other sections of the document prepared by the Procuring Entity, care must be exercised to avoid contradictions between clauses dealing with the same matter.

Moreover, each section is prepared with notes intended only as information for the Procuring Entity or the person drafting the Bidding Documents. They shall not be included in the final documents. The following general directions should be observed when using the documents:

- a. All the documents listed in the Table of Contents are normally required for the procurement of Infrastructure Projects. However, they should be adapted as necessary to the circumstances of the particular Project.
- b. Specific details, such as the “*name of the Procuring Entity*” and “*address for bid submission*,” should be furnished in the Instructions to Bidders, Bid Data Sheet, and Special Conditions of Contract. The final documents should contain neither blank spaces nor options.
- c. This Preface and the footnotes or notes in italics included in the Invitation to Bid, BDS, General Conditions of Contract, Special Conditions of Contract, Specifications, Drawings, and Bill of Quantities are not part of the text of the final document, although they contain instructions that the Procuring Entity should strictly follow.
- d. The cover should be modified as required to identify the Bidding Documents as to the names of the Project, Contract, and Procuring Entity, in addition to date of issue.

- e. Modifications for specific Procurement Project details should be provided in the Special Conditions of Contract as amendments to the Conditions of Contract. For easy completion, whenever reference has to be made to specific clauses in the Bid Data Sheet or Special Conditions of Contract, these terms shall be printed in bold typeface on Sections I (Instructions to Bidders) and III (General Conditions of Contract), respectively.
- f. For guidelines on the use of Bidding Forms and the procurement of Foreign-Assisted Projects, these will be covered by a separate issuance of the Government Procurement Policy Board.

TABLE OF CONTENTS

1.1.	<i>Glossary of Terms, Abbreviations, and Acronyms</i>	5
1.2.	<i>Section I. Invitation to Bid</i>	8
1.3.	<i>Section II. Instructions to Bidders</i>	11
1.	<i>Scope of Bid</i>	11
2.	<i>Funding Information</i>	12
3.	<i>Bidding Requirements</i>	12
4.	<i>Corrupt, Fraudulent, Collusive, Coercive, and Obstructive Practices</i>	12
5.	<i>Eligible Bidders</i>	13
6.	<i>Origin of Associated Goods</i>	13
7.	<i>Subcontracts</i>	13
8.	<i>Pre-Bid Conference</i>	13
9.	<i>Clarification and Amendment of Bidding Documents</i>	13
10.	<i>Documents Comprising the Bid: Eligibility and Technical Components</i>	14
11.	<i>Documents Comprising the Bid: Financial Component</i>	14
12.	<i>Alternative Bids</i>	15
13.	<i>Bid Prices</i>	15
14.	<i>Bid and Payment Currencies</i>	15
15.	<i>Bid Security</i>	15
16.	<i>Sealing and Marking of Bids</i>	15
17.	<i>Deadline for Submission of Bids</i>	16
18.	<i>Opening and Preliminary Examination of Bids</i>	16
19.	<i>Detailed Evaluation and Comparison of Bids</i>	16
20.	<i>Post Qualification</i>	16
21.	<i>Signing of the Contract</i>	17
1.4.	<i>Section III. Bid Data Sheet</i>	18

1.5.	Section IV. General Conditions of Contract	22
1.	Scope of Contract	23
2.	Sectional Completion of Works	23
3.	Possession of Site	23
4.	The Contractor's Obligations	23
5.	Performance Security	23
6.	Site Investigation Reports	24
7.	Warranty	24
8.	Liability of the Contractor	24
9.	Termination for Other Causes	24
10.	Dayworks	24
11.	Program of Work	25
12.	Instructions, Inspections and Audits	25
13.	Advance Payment	25
14.	Progress Payments	25
15.	Operating and Maintenance Manuals	25
1.6.	Section V. Special Conditions of Contract	27
1.7.	Section VI. Specifications	29
1.8.	Section VII. Drawings	32
1.9.	Section VIII. Bill of Quantities	44
1.10.	Section IX. Checklist of Technical and Financial Documents	64

Glossary of Terms, Abbreviations, and Acronyms

ABC – Approved Budget for the Contract.

ARCC – Allowable Range of Contract Cost.

BAC – Bids and Awards Committee.

Bid – A signed offer or proposal to undertake a contract submitted by a bidder in response to and in consonance with the requirements of the bidding documents. Also referred to as *Proposal* and *Tender*. (2016 revised IRR, Section 5[c])

Bidder – Refers to a contractor, manufacturer, supplier, distributor and/or consultant who submits a bid in response to the requirements of the Bidding Documents. (2016 revised IRR, Section 5[d])

Bidding Documents – The documents issued by the Procuring Entity as the bases for bids, furnishing all information necessary for a prospective bidder to prepare a bid for the Goods, Infrastructure Projects, and/or Consulting Services required by the Procuring Entity. (2016 revised IRR, Section 5[e])

BIR – Bureau of Internal Revenue.

BSP – Bangko Sentral ng Pilipinas.

CDA – Cooperative Development Authority.

Consulting Services – Refer to services for Infrastructure Projects and other types of projects or activities of the GOP requiring adequate external technical and professional expertise that are beyond the capability and/or capacity of the GOP to undertake such as, but not limited to: (i) advisory and review services; (ii) pre-investment or feasibility studies; (iii) design; (iv) construction supervision; (v) management and related services; and (vi) other technical services or special studies. (2016 revised IRR, Section 5[i])

Contract – Refers to the agreement entered into between the Procuring Entity and the Supplier or Manufacturer or Distributor or Service Provider for procurement of Goods and Services; Contractor for Procurement of Infrastructure Projects; or Consultant or Consulting Firm for Procurement of Consulting Services; as the case may be, as recorded in the Contract Form signed by the parties, including all attachments and appendices thereto and all documents incorporated by reference therein.

Contractor – is a natural or juridical entity whose proposal was accepted by the Procuring Entity and to whom the Contract to execute the Work was awarded. Contractor as used in these Bidding Documents may likewise refer to a supplier, distributor, manufacturer, or consultant.

CPI – Consumer Price Index.

DOLE – Department of Labor and Employment.

DTI – Department of Trade and Industry.

Foreign-funded Procurement or Foreign-Assisted Project – Refers to procurement whose funding source is from a foreign government, foreign or international financing institution as specified in the Treaty or International or Executive Agreement. (2016 revised IRR, Section 5[b]).

GFI – Government Financial Institution.

GOCC – Government-owned and/or –controlled corporation.

Goods – Refer to all items, supplies, materials and general support services, except Consulting Services and Infrastructure Projects, which may be needed in the transaction of public businesses or in the pursuit of any government undertaking, project or activity, whether in the nature of equipment, furniture, stationery, materials for construction, or personal property of any kind, including non-personal or contractual services such as the repair and maintenance of equipment and furniture, as well as trucking, hauling, janitorial, security, and related or analogous services, as well as procurement of materials and supplies provided by the Procuring Entity for such services. The term “related” or “analogous services” shall include, but is not limited to, lease or purchase of office space, media advertisements, health maintenance services, and other services essential to the operation of the Procuring Entity. (2016 revised IRR, Section 5[r])

GOP – Government of the Philippines.

Infrastructure Projects – Include the construction, improvement, rehabilitation, demolition, repair, restoration or maintenance of roads and bridges, railways, airports, seaports, communication facilities, civil works components of information technology projects, irrigation, flood control and drainage, water supply, sanitation, sewerage and solid waste management systems, shore protection, energy/power and electrification facilities, national buildings, school buildings, hospital buildings, and other related construction projects of the government. Also referred to as *civil works or works*. (2016 revised IRR, Section 5[u])

LGUs – Local Government Units.

NFCC – Net Financial Contracting Capacity.

NGA – National Government Agency.

PCAB – Philippine Contractors Accreditation Board.

PhilGEPS - Philippine Government Electronic Procurement System.

Procurement Project – refers to a specific or identified procurement covering goods, infrastructure project or consulting services. A Procurement Project shall be described, detailed, and scheduled in the Project Procurement Management Plan prepared by the agency which shall be consolidated in the procuring entity's Annual Procurement Plan. (GPPB Circular No. 06-2019 dated 17 July 2019)

PSA – Philippine Statistics Authority.

SEC – Securities and Exchange Commission.

SLCC – Single Largest Completed Contract.

UN – United Nations.

Section I. Invitation to Bid

Notes on the Invitation to Bid

The Invitation to Bid (IB) provides information that enables potential Bidders to decide whether to participate in the procurement at hand. The IB shall be posted in accordance with Section 21.2 of the 2016 revised IRR of RA No. 9184.

Apart from the essential items listed in the Bidding Documents, the IB should also indicate the following:

- a. The date of availability of the Bidding Documents, which shall be from the time the IB is first advertised/posted until the deadline for the submission and receipt of bids;
- b. The place where the Bidding Documents may be acquired or the website where it may be downloaded;
- c. The deadline for the submission and receipt of bids; and
- d. Any important bid evaluation criteria.

The IB should be incorporated into the Bidding Documents. The information contained in the IB must conform to the Bidding Documents and in particular to the relevant information in the Bid Data Sheet.



INVITATION TO BID FOR

IB2023 – 098E

**PROCUREMENT OF PROPOSED RENOVATION AND UPGRADING OF
ARSENIA J. MAXIMO SUPER HEALTH CENTER**

1. The **DEPARTMENT OF HEALTH - METRO MANILA - CENTER FOR HEALTH DEVELOPMENT**, through the **HFEP 2022 ConAp** intends to apply the sum of **NINE MILLION SEVEN HUNDRED NINETY THOUSAND ONE HUNDRED SIXTY-FOUR PESOS AND FOURTY-FOUR CENTAVO (P 9,790,164.44)** being the Approved Budget for the Contract (ABC) to payments under the contract for **PROCUREMENT OF PROPOSED RENOVATION AND UPGRADING OF ARSENIA J. MAXIMO SUPER HEALTH CENTER**. Bids received in excess of the ABC shall be automatically rejected at bid opening.
2. The **DEPARTMENT OF HEALTH - METRO MANILA - CENTER FOR HEALTH DEVELOPMENT** now invites bids for the above Procurement Project. Completion of the Works is required *One Hundred Twenty (120) Calendar days*. Bidders should have completed a contract similar to the Project. The description of an eligible bidder is contained in the Bidding Documents, particularly, in Section II (Instructions to Bidders).
3. Bidding will be conducted through open competitive bidding procedures using non-discretionary “*pass/fail*” criterion as specified in the 2016 revised Implementing Rules and Regulations (IRR) of Republic Act (RA) No. 9184.
4. Interested bidders may obtain further information from **DEPARTMENT OF HEALTH - METRO MANILA CENTER FOR HEALTH DEVELOPMENT** and inspect the Bidding Documents at the address given below from 08:30 AM – 04:00 PM Monday to Friday.
5. A complete set of Bidding Documents may be acquired by interested bidders on **JUNE 28 to JULY 18, 2023** from given address and website/s below *{Insert if necessary: and upon payment of the applicable fee for the Bidding Documents, pursuant to the latest Guidelines issued by the GPPB, in the amount of One Thousand Pesos (P 1,000.00) Only}*. It may also be downloaded free of charge from the website of the Philippine Government Electronic Procurement System (PhilGEPS) and the website of the Procuring Entity, provided that Bidders shall pay the applicable fee for the Bidding Documents not later than the submission of their bids.
6. The **DEPARTMENT OF HEALTH - METRO MANILA CENTER FOR HEALTH DEVELOPMENT** will hold a Pre-Bid Conference¹ on **July 6, 2023, 9:00 AM** at **MMCHD Amphitheater, Mandaluyong City**, which shall be open to prospective bidders.

¹ May be deleted in case the ABC is less than One Million Pesos (PhP1,000,000) where the Procuring Entity may not hold a pre-bid conference.

7. Bids must be duly received by the BAC Secretariat through (i) manual submission at the office address indicated below, on or before JULY 18, 2023 AT 9:00 AM. Late bids shall not be accepted.
8. All bids must be accompanied by a bid security in any of the acceptable forms and in the amount stated in **ITB** Clause 16.
9. Bid opening shall be on JULY 18, 2023 AT 10:00 AM at the DOH – MMCHD AMPHITHEATER, MANDALUYONG CITY. Bids will be opened in the presence of the bidders’ representatives who choose to attend the activity.
10. *The DEPARTMENT OF HEALTH - METRO MANILA CENTER FOR HEALTH DEVELOPMENT reserves the right to reject any and all bids, declare a failure of bidding, or not award the contract at any time prior to contract award in accordance with Sections 35.6 and 41 of the 2016 revised IRR of RA No. 9184, without thereby incurring any liability to the affected bidder or bidders.*
11. For further information, please refer to:

MMCHD, BAC Office

PRETCHELL P. TOLENTINO, MD, MCHM

Director III / BAC Chairperson

BAC Secretariat c/o Ma. Rossana C. Fariñas

Block 6 Barangay Road, Welfareville Compound

Barangay Additional Hills, Mandaluyong City 1550

8-531-00-15/32 loc. 308

bacoffice@ncro.doh.gov.ph

You may visit the following websites:

For downloading of Bidding Documents: ***<http://ncroffice.doh.gov.ph/BidsAndAwardsCommittee>***

PRETCHELL P. TOLENTINO, MD, MCHM
Director III / BAC Chairperson

Section II. Instructions to Bidders

Notes on the Instructions to Bidders

This Section on the Instruction to Bidders (ITB) provides the information necessary for bidders to prepare responsive bids, in accordance with the requirements of the Procuring Entity. It also provides information on bid submission, eligibility check, opening and evaluation of bids, post-qualification, and on the award of contract.

1. Scope of Bid

The Procuring Entity, DEPARTMENT OF HEALTH - METRO MANILA - CENTER FOR HEALTH DEVELOPMENT wishes to receive Bids for the PROCUREMENT OF PROPOSED RENOVATION AND UPGRADING OF ARSENIA J. MAXIMO SUPER HEALTH CENTER with identification number IB 2023 – 098E

The Procurement Project (referred to herein as “Project”) is for the construction of Works, as described in Section VI (Specifications).

2. Funding Information

2.1. The GOP through the source of funding as indicated below for 2023 in the amount of *NINE MILLION SEVEN HUNDRED NINETY THOUSAND ONE HUNDRED SIXTY-FOUR PESOS AND FOURTY-FOUR CENTAVO (P 9,790,164.44)*.

2.2. The source of funding is:

SAA 2023-02-0531

3. Bidding Requirements

The Bidding for the Project shall be governed by all the provisions of RA No. 9184 and its 2016 revised IRR, including its Generic Procurement Manual and associated policies, rules and regulations as the primary source thereof, while the herein clauses shall serve as the secondary source thereof.

Any amendments made to the IRR and other GPPB issuances shall be applicable only to the ongoing posting, advertisement, or invitation to bid by the BAC through the issuance of a supplemental or bid bulletin.

The Bidder, by the act of submitting its Bid, shall be deemed to have inspected the site, determined the general characteristics of the contracted Works and the conditions for this Project, such as the location and the nature of the work; (b) climatic conditions; (c) transportation facilities; (c) nature and condition of the terrain, geological conditions at the site communication facilities, requirements, location and availability of construction aggregates and other materials, labor, water, electric power and access roads; and (d) other factors that may affect the cost, duration and execution or implementation of the contract, project, or work and examine all instructions, forms, terms, and project requirements in the Bidding Documents.

4. Corrupt, Fraudulent, Collusive, Coercive, and Obstructive Practices

The Procuring Entity, as well as the Bidders and Contractors, shall observe the highest standard of ethics during the procurement and execution of the contract. They or through an agent shall not engage in corrupt, fraudulent, collusive, coercive, and obstructive practices defined under Annex “I” of the 2016 revised IRR of RA No. 9184 or other integrity violations in competing for the Project.

5. Eligible Bidders

- 5.1. Only Bids of Bidders found to be legally, technically, and financially capable will be evaluated.
- 5.2. The Bidder must have an experience of having completed a Single Largest Completed Contract (SLCC) that is similar to this Project, equivalent to at least fifty percent (50%) of the ABC adjusted, if necessary, by the Bidder to current prices using the PSA's CPI, except under conditions provided for in Section 23.4.2.4 of the 2016 revised IRR of RA No. 9184.

A contract is considered to be "similar" to the contract to be bid if it has the major categories of work stated in the **BDS**.
- 5.3. For Foreign-funded Procurement, the Procuring Entity and the foreign government/foreign or international financing institution may agree on another track record requirement, as specified in the Bidding Document prepared for this purpose.
- 5.4. The Bidders shall comply with the eligibility criteria under Section 23.4.2 of the 2016 IRR of RA No. 9184.

6. Origin of Associated Goods

There is no restriction on the origin of Goods other than those prohibited by a decision of the UN Security Council taken under Chapter VII of the Charter of the UN.

7. Subcontracts

- 7.1. The Bidder may subcontract portions of the Project to the extent allowed by the Procuring Entity as stated herein, but in no case more than fifty percent (50%) of the Project.

The Procuring Entity has prescribed that:

- a. Subcontracting is not allowed.
- 7.1. Subcontracting of any portion of the Project does not relieve the Contractor of any liability or obligation under the Contract. The Supplier will be responsible for the acts, defaults, and negligence of any subcontractor, its agents, servants, or workmen as fully as if these were the Contractor's own acts, defaults, or negligence, or those of its agents, servants, or workmen.

8. Pre-Bid Conference

The Procuring Entity will hold a pre-bid conference for this Project on the specified date and time and either at its physical address **MMCHD Amphitheater, Mandaluyong City** as indicated in paragraph 6 of the **IB**.

9. Clarification and Amendment of Bidding Documents

Prospective bidders may request for clarification on and/or interpretation of any part of the Bidding Documents. Such requests must be in writing and received by the Procuring Entity, either at its given address or through electronic mail indicated in the **IB**, at least ten (10) calendar days before the deadline set for the submission and receipt of Bids.

10. Documents Comprising the Bid: Eligibility and Technical Components

- 10.1. The first envelope shall contain the eligibility and technical documents of the Bid as specified in **Section IX. Checklist of Technical and Financial Documents**.
- 10.2. If the eligibility requirements or statements, the bids, and all other documents for submission to the BAC are in foreign language other than English, it must be accompanied by a translation in English, which shall be authenticated by the appropriate Philippine foreign service establishment, post, or the equivalent office having jurisdiction over the foreign bidder's affairs in the Philippines. For Contracting Parties to the Apostille Convention, only the translated documents shall be authenticated through an apostille pursuant to GPPB Resolution No. 13-2019 dated 23 May 2019. The English translation shall govern, for purposes of interpretation of the bid.
- 10.3. A valid special PCAB License in case of Joint Ventures, and registration for the type and cost of the contract for this Project. Any additional type of Contractor license or permit shall be indicated in the **BDS**.
- 10.4. A List of Contractor's key personnel (e.g., Project Manager, Project Engineers, Materials Engineers, and Foremen) assigned to the contract to be bid, with their complete qualification and experience data shall be provided. These key personnel must meet the required minimum years of experience set in the **BDS**.
- 10.5. A List of Contractor's major equipment units, which are owned, leased, and/or under purchase agreements, supported by proof of ownership, certification of availability of equipment from the equipment lessor/vendor for the duration of the project, as the case may be, must meet the minimum requirements for the contract set in the **BDS**.

11. Documents Comprising the Bid: Financial Component

- 11.1. The second bid envelope shall contain the financial documents for the Bid as specified in **Section IX. Checklist of Technical and Financial Documents**.
- 11.2. Any bid exceeding the ABC indicated in paragraph 1 of the **IB** shall not be accepted.
- 11.3. For Foreign-funded procurement, a ceiling may be applied to bid prices provided the conditions are met under Section 31.2 of the 2016 revised IRR of RA No. 9184.

12. Alternative Bids

Bidders shall submit offers that comply with the requirements of the Bidding Documents, including the basic technical design as indicated in the drawings and specifications. Unless there is a value engineering clause in the **BDS**, alternative Bids shall not be accepted.

13. Bid Prices

All bid prices for the given scope of work in the Project as awarded shall be considered as fixed prices, and therefore not subject to price escalation during contract implementation, except under extraordinary circumstances as determined by the NEDA and approved by the GPPB pursuant to the revised Guidelines for Contract Price Escalation guidelines.

14. Bid and Payment Currencies

14.1. Bid prices may be quoted in the local currency or tradeable currency accepted by the BSP at the discretion of the Bidder. However, for purposes of bid evaluation, Bids denominated in foreign currencies shall be converted to Philippine currency based on the exchange rate as published in the BSP reference rate bulletin on the day of the bid opening.

14.2. *Payment of the contract price shall be made in:*

[Select one, delete other/s]

a. Philippine Pesos.

b. *[indicate currency if procurement involves a foreign-denominated bid as allowed by the Procuring Entity, which shall be tradeable or acceptable by the BSP.]*

15. Bid Security

15.1. The Bidder shall submit a Bid Securing Declaration or any form of Bid Security in the amount indicated in the **BDS**, which shall be not less than the percentage of the ABC in accordance with the schedule in the **BDS**.

15.2. The Bid and bid security shall be valid until *[indicate date]*. Any bid not accompanied by an acceptable bid security shall be rejected by the Procuring Entity as non-responsive.

16. Sealing and Marking of Bids

Each Bidder shall submit one copy of the first and second components of its Bid.

The Procuring Entity may request additional hard copies and/or electronic copies of the Bid. However, failure of the Bidders to comply with the said request shall not be a ground for disqualification.

If the Procuring Entity allows the submission of bids through online submission to the given website or any other electronic means, the Bidder shall submit an electronic copy of its Bid, which must be digitally signed. An electronic copy that cannot be opened or is corrupted shall be considered non-responsive and, thus, automatically disqualified.

17. Deadline for Submission of Bids

The Bidders shall submit on the specified date and time and either at its physical address or through online submission as indicated in paragraph 7 of the **IB**.

18. Opening and Preliminary Examination of Bids

18.1. The BAC shall open the Bids in public at the time, on the date, and at the place specified in paragraph 9 of the **IB**. The Bidders' representatives who are present shall sign a register evidencing their attendance. In case videoconferencing, webcasting or other similar technologies will be used, attendance of participants shall likewise be recorded by the BAC Secretariat.

In case the Bids cannot be opened as scheduled due to justifiable reasons, the rescheduling requirements under Section 29 of the 2016 revised IRR of RA No. 9184 shall prevail.

18.2. The preliminary examination of Bids shall be governed by Section 30 of the 2016 revised IRR of RA No. 9184.

19. Detailed Evaluation and Comparison of Bids

19.1. The Procuring Entity's BAC shall immediately conduct a detailed evaluation of all Bids rated "*passed*" using non-discretionary pass/fail criteria. The BAC shall consider the conditions in the evaluation of Bids under Section 32.2 of 2016 revised IRR of RA No. 9184.

19.2. If the Project allows partial bids, all Bids and combinations of Bids as indicated in the **BDS** shall be received by the same deadline and opened and evaluated simultaneously so as to determine the Bid or combination of Bids offering the lowest calculated cost to the Procuring Entity. Bid Security as required by **ITB** Clause 15 shall be submitted for each contract (lot) separately.

19.3. In all cases, the NFCC computation pursuant to Section 23.4.2.6 of the 2016 revised IRR of RA No. 9184 must be sufficient for the total of the ABCs for all the lots participated in by the prospective Bidder.

20. Post Qualification

Within a non-extendible period of five (5) calendar days from receipt by the Bidder of the notice from the BAC that it submitted the Lowest Calculated Bid, the Bidder shall submit its latest income and business tax returns filed and paid through the BIR

Electronic Filing and Payment System (eFPS), and other appropriate licenses and permits required by law and stated in the **BDS**.

21. Signing of the Contract

The documents required in Section 37.2 of the 2016 revised IRR of RA No. 9184 shall form part of the Contract. Additional Contract documents are indicated in the **BDS**.

Section III. Bid Data Sheet

Notes on the Bid Data Sheet (BDS)

The Bid Data Sheet (BDS) consists of provisions that supplement, amend, or specify in detail, information, or requirements included in the ITB found in Section II, which are specific to each procurement.

This Section is intended to assist the Procuring Entity in providing the specific information in relation to corresponding clauses in the ITB and has to be prepared for each specific procurement.

The Procuring Entity should specify in the BDS information and requirements specific to the circumstances of the Procuring Entity, the processing of the procurement, and the bid evaluation criteria that will apply to the Bids. In preparing the BDS, the following aspects should be checked:

- a. Information that specifies and complements provisions of the ITB must be incorporated.
- b. Amendments and/or supplements, if any, to provisions of the ITB as necessitated by the circumstances of the specific procurement, must also be incorporated.

Bid Data Sheet

ITB Clause			
5.2	For this purpose, contracts similar to the Project refer to contracts which have the same major categories of work, which shall be: <i>[provide description/clarification of what are major categories of work].</i>		
7.1	<i>[Specify the portions of Works and the maximum percentage allowed to be subcontracted, which shall not be significant or material components of the Project as determined by the Procuring Entity.]</i>		
10.3	<i>PCAB License (at least Small B)</i>		
10.4	The key personnel must meet the required minimum years of experience set below:		
	Key Personnel	General Experience	Relevant Experience
	Project Manager	Minimum of 10 years' experience	Must have managed at least 3 health facilities/offices construction or repair/renovation in the last 5 years
	Civil Engineer/Architect	Minimum of 5 years' experience	Must have supervised at least 1 health facility/office construction or repair/renovation in the last 3 years
	Electrical Engineer	Minimum of 5 years' experience	Must have supervised at least 1 health facility/office construction or repair/renovation in the last 3 years
	Safety Engineer/Officer	Minimum of 2 years' experience	Must have implemented and managed safety programs for health facility/office construction or repair/renovation works
	QC/QA Engineer/Officer	Minimum of 2 years' experience	Should have managed/participated in any health facility/office construction or repair/renovation works

	General Foreman	Minimum of 3 years' experience	Must have supervised at least 1 health facility/office construction or repair/renovation in the last 2 years																														
10.5	<p>The minimum major equipment requirements are the following:</p> <table border="1"> <thead> <tr> <th>Equipment</th> <th>Capacity</th> <th>Number of Units</th> </tr> </thead> <tbody> <tr> <td>1. Dump truck/Elf truck</td> <td></td> <td><u>1</u></td> </tr> <tr> <td>2. Demolition Hammer/Electric Jack Hammer</td> <td></td> <td><u>1</u></td> </tr> <tr> <td>3. Oxy-acetylene cutting machine</td> <td></td> <td><u>1</u></td> </tr> <tr> <td>4. Rebar cutter</td> <td></td> <td><u>1</u></td> </tr> <tr> <td>5. Rebar bender</td> <td></td> <td><u>1</u></td> </tr> <tr> <td>6. Portable electric drill</td> <td></td> <td><u>1</u></td> </tr> <tr> <td>7. Portable electric grinder</td> <td></td> <td><u>1</u></td> </tr> <tr> <td>8. Welding machine</td> <td></td> <td><u>1</u></td> </tr> <tr> <td>9. Steel scaffolding</td> <td></td> <td><u>1</u></td> </tr> </tbody> </table>			Equipment	Capacity	Number of Units	1. Dump truck/Elf truck		<u>1</u>	2. Demolition Hammer/Electric Jack Hammer		<u>1</u>	3. Oxy-acetylene cutting machine		<u>1</u>	4. Rebar cutter		<u>1</u>	5. Rebar bender		<u>1</u>	6. Portable electric drill		<u>1</u>	7. Portable electric grinder		<u>1</u>	8. Welding machine		<u>1</u>	9. Steel scaffolding		<u>1</u>
Equipment	Capacity	Number of Units																															
1. Dump truck/Elf truck		<u>1</u>																															
2. Demolition Hammer/Electric Jack Hammer		<u>1</u>																															
3. Oxy-acetylene cutting machine		<u>1</u>																															
4. Rebar cutter		<u>1</u>																															
5. Rebar bender		<u>1</u>																															
6. Portable electric drill		<u>1</u>																															
7. Portable electric grinder		<u>1</u>																															
8. Welding machine		<u>1</u>																															
9. Steel scaffolding		<u>1</u>																															
12	<i>No. further Instructions.</i>																																
15.1	<p>The bid security shall be in the form of a Bid Securing Declaration or any of the following forms and amounts:</p> <p>a. The amount of not less than _____ <i>[Insert two percent (2%) of ABC]</i>, if bid security is in cash, cashier's/manager's check, bank draft/guarantee or irrevocable letter of credit;</p> <p>b. The amount of not less than _____ <i>[Insert five percent (5%) of ABC]</i> if bid security is in Surety Bond.</p>																																
19.2	<p>Partial bids are allowed, as follows: <i>Not applicable</i></p>																																
20	<i>No. futher instructions.</i>																																
21	<p>21 The following documents must be submitted within 3 days upon receipt of Notice of Award:</p> <ol style="list-style-type: none"> 1. Construction schedule and S-curve; 2. Manpower schedule; 3. Construction methods; 4. Equipment utilization schedule; 																																

	<p>5. Construction safety and health program approved by the Department of Labor and Employment;</p> <p>6. PERT/CPM or other acceptable tools of project scheduling; 7. List of key personnel by name and designation; and,</p> <p>8. Program of Works for the first 15days.</p>
--	--

Section IV. General Conditions of Contract

Notes on the General Conditions of Contract

The General Conditions of Contract (GCC) in this Section, read in conjunction with the Special Conditions of Contract in Section V and other documents listed therein, should be a complete document expressing all the rights and obligations of the parties.

Matters governing performance of the Contractor, payments under the contract, or matters affecting the risks, rights, and obligations of the parties under the contract are included in the GCC and Special Conditions of Contract.

Any complementary information, which may be needed, shall be introduced only through the Special Conditions of Contract.

2. Scope of Contract

This Contract shall include all such items, although not specifically mentioned, that can be reasonably inferred as being required for its completion as if such items were expressly mentioned herein. All the provisions of RA No. 9184 and its 2016 revised IRR, including the Generic Procurement Manual, and associated issuances, constitute the primary source for the terms and conditions of the Contract, and thus, applicable in contract implementation. Herein clauses shall serve as the secondary source for the terms and conditions of the Contract.

This is without prejudice to Sections 74.1 and 74.2 of the 2016 revised IRR of RA No. 9184 allowing the GPPB to amend the IRR, which shall be applied to all procurement activities, the advertisement, posting, or invitation of which were issued after the effectivity of the said amendment.

3. Sectional Completion of Works

If sectional completion is specified in the **Special Conditions of Contract (SCC)**, references in the Conditions of Contract to the Works, the Completion Date, and the Intended Completion Date shall apply to any Section of the Works (other than references to the Completion Date and Intended Completion Date for the whole of the Works).

4. Possession of Site

3.1 The Procuring Entity shall give possession of all or parts of the Site to the Contractor based on the schedule of delivery indicated in the **SCC**, which corresponds to the execution of the Works. If the Contractor suffers delay or incurs cost from failure on the part of the Procuring Entity to give possession in accordance with the terms of this clause, the Procuring Entity's Representative shall give the Contractor a Contract Time Extension and certify such sum as fair to cover the cost incurred, which sum shall be paid by Procuring Entity.

3.2 If possession of a portion is not given by the above date, the Procuring Entity will be deemed to have delayed the start of the relevant activities. The resulting adjustments in contract time to address such delay may be addressed through contract extension provided under Annex "E" of the 2016 revised IRR of RA No. 9184.

5. The Contractor's Obligations

The Contractor shall employ the key personnel named in the Schedule of Key Personnel indicating their designation, in accordance with **ITB** Clause 10.3 and specified in the **BDS**, to carry out the supervision of the Works.

The Procuring Entity will approve any proposed replacement of key personnel only if their relevant qualifications and abilities are equal to or better than those of the personnel listed in the Schedule.

6. Performance Security

5.1. Within ten (10) calendar days from receipt of the Notice of Award from the Procuring Entity but in no case later than the signing of the contract by both

parties, the successful Bidder shall furnish the performance security in any of the forms prescribed in Section 39 of the 2016 revised IRR.

- 5.2. The Contractor, by entering into the Contract with the Procuring Entity, acknowledges the right of the Procuring Entity to institute action pursuant to RA No. 3688 against any subcontractor be they an individual, firm, partnership, corporation, or association supplying the Contractor with labor, materials and/or equipment for the performance of this Contract.

7. Site Investigation Reports

The Contractor, in preparing the Bid, shall rely on any Site Investigation Reports referred to in the **SCC** supplemented by any information obtained by the Contractor.

8. Warranty

- 7.1. In case the Contractor fails to undertake the repair works under Section 62.2.2 of the 2016 revised IRR, the Procuring Entity shall forfeit its performance security, subject its property(ies) to attachment or garnishment proceedings, and perpetually disqualify it from participating in any public bidding. All payables of the GOP in his favor shall be offset to recover the costs.
- 7.2. The warranty against Structural Defects/Failures, except that occasioned-on force majeure, shall cover the period from the date of issuance of the Certificate of Final Acceptance by the Procuring Entity. Specific duration of the warranty is found in the **SCC**.

9. Liability of the Contractor

Subject to additional provisions, if any, set forth in the **SCC**, the Contractor's liability under this Contract shall be as provided by the laws of the Republic of the Philippines.

If the Contractor is a joint venture, all partners to the joint venture shall be jointly and severally liable to the Procuring Entity.

10. Termination for Other Causes

Contract termination shall be initiated in case it is determined *prima facie* by the Procuring Entity that the Contractor has engaged, before, or during the implementation of the contract, in unlawful deeds and behaviors relative to contract acquisition and implementation, such as, but not limited to corrupt, fraudulent, collusive, coercive, and obstructive practices as stated in **ITB** Clause 4.

11. Dayworks

Subject to the guidelines on Variation Order in Annex "E" of the 2016 revised IRR of RA No. 9184, and if applicable as indicated in the **SCC**, the Dayworks rates in the

Contractor's Bid shall be used for small additional amounts of work only when the Procuring Entity's Representative has given written instructions in advance for additional work to be paid for in that way.

12. Program of Work

11.1. The Contractor shall submit to the Procuring Entity's Representative for approval the said Program of Work showing the general methods, arrangements, order, and timing for all the activities in the Works. The submissions of the Program of Work are indicated in the **SCC**.

11.2. The Contractor shall submit to the Procuring Entity's Representative for approval an updated Program of Work at intervals no longer than the period stated in the **SCC**. If the Contractor does not submit an updated Program of Work within this period, the Procuring Entity's Representative may withhold the amount stated in the **SCC** from the next payment certificate and continue to withhold this amount until the next payment after the date on which the overdue Program of Work has been submitted.

13. Instructions, Inspections and Audits

The Contractor shall permit the GOP or the Procuring Entity to inspect the Contractor's accounts and records relating to the performance of the Contractor and to have them audited by auditors of the GOP or the Procuring Entity, as may be required.

14. Advance Payment

The Procuring Entity shall, upon a written request of the Contractor which shall be submitted as a Contract document, make an advance payment to the Contractor in an amount not exceeding fifteen percent (15%) of the total contract price, to be made in lump sum, or at the most two installments according to a schedule specified in the **SCC**, subject to the requirements in Annex "E" of the 2016 revised IRR of RA No. 9184.

15. Progress Payments

The Contractor may submit a request for payment for Work accomplished. Such requests for payment shall be verified and certified by the Procuring Entity's Representative/Project Engineer. Except as otherwise stipulated in the **SCC**, materials and equipment delivered on the site but not completely put in place shall not be included for payment.

16. Operating and Maintenance Manuals

15.1. If required, the Contractor will provide "as built" Drawings and/or operating and maintenance manuals as specified in the **SCC**.

- 15.2. If the Contractor does not provide the Drawings and/or manuals by the dates stated above, or they do not receive the Procuring Entity's Representative's approval, the Procuring Entity's Representative may withhold the amount stated in the SCC from payments due to the Contractor.

Section V. Special Conditions of Contract

Notes on the Special Conditions of Contract

Similar to the BDS, the clauses in this Section are intended to assist the Procuring Entity in providing contract-specific information in relation to corresponding clauses in the GCC found in Section IV.

The Special Conditions of Contract (SCC) complement the GCC, specifying contractual requirements linked to the special circumstances of the Procuring Entity, the Procuring Entity's country, the sector, and the Works procured. In preparing this Section, the following aspects should be checked:

- a. Information that complements provisions of the GCC must be incorporated.
- b. Amendments and/or supplements to provisions of the GCC as necessitated by the circumstances of the specific purchase, must also be incorporated.

However, no special condition which defeats or negates the general intent and purpose of the provisions of the GCC should be incorporated herein.

Special Conditions of Contract

GCC Clause	
2	The Intended Completion Date is <i>one hundred twenty (120) calendar days</i> <i>NOTE: The contract duration shall be reckoned from the start date and not from contract effectivity date.</i>
4.1	The Procuring Entity shall give possession of all parts of the Site to the Contractor <i>[insert date]</i> .
6	The site investigation reports are: <i>Site Investigation Report must be certified by the End-user</i>
7.2	<i>In case of permanent structures, such as buildings of types 4 and 5 as classified under the National Building Code of the Philippines and other structures made of steel, iron, or concrete which comply with relevant structural codes (e.g., DPWH Standard Specifications), such as, but not limited to, steel/concrete bridges, flyovers, aircraft movement areas, ports, dams, tunnels, filtration and treatment plants, sewerage systems, power plants, transmission and communication towers, railway system, and other similar permanent structures: Fifteen (15) years.</i>
10	<i>[Select one, delete the other:]</i> a. Dayworks are applicable at the rate shown in the Contractor’s original Bid. b. No dayworks are applicable to the contract.
11.1	The Contractor shall submit the Program of Work to the Procuring Entity’s Representative within <i>[insert number]</i> days of delivery of the Notice of Award.
11.2	The amount to be withheld for late submission of an updated Program of Work is <i>[insert amount]</i> .
13	The amount of the advance payment is <i>One Million Four Hundred Sixty-Eight Thousand Five Hundred Twenty Four Pesos and Sixty-Seven Centavos(1,468,524.67) Only.</i>
14	<i>[If allowed by the Procuring Entity, state:]</i> Materials and equipment delivered on the site but not completely put in place shall be included for payment.
15.1	The date by which operating and maintenance manuals are required is <i>upon completion of project.</i> The date by which “as built” drawings are required is <i>[date]</i> .
15.2	The amount to be withheld for failing to produce “as built” drawings and/or operating and maintenance manuals by the date required is <i>[amount in local currency]</i> .

Section VI. Specifications

Notes on Specifications

A set of precise and clear specifications is a prerequisite for Bidders to respond realistically and competitively to the requirements of the Procuring Entity without

qualifying or conditioning their Bids. In the context of international competitive bidding, the specifications must be drafted to permit the widest possible competition and, at the same time, present a clear statement of the required standards of workmanship, materials, and performance of the goods and services to be procured. Only if this is done will the objectives of economy, efficiency, and fairness in procurement be realized, responsiveness of Bids be ensured, and the subsequent task of bid evaluation facilitated. The specifications should require that all goods and materials to be incorporated in the Works be new, unused, of the most recent or current models, and incorporate all recent improvements in design and materials unless provided otherwise in the Contract.

Samples of specifications from previous similar projects are useful in this respect. The use of metric units is mandatory. Most specifications are normally written specially by the Procuring Entity or its representative to suit the Works at hand. There is no standard set of Specifications for universal application in all sectors in all regions, but there are established principles and practices, which are reflected in these PBDs.

There are considerable advantages in standardizing General Specifications for repetitive Works in recognized public sectors, such as highways, ports, railways, urban housing, irrigation, and water supply, in the same country or region where similar conditions prevail. The General Specifications should cover all classes of workmanship, materials, and equipment commonly involved in construction, although not necessarily to be used in a particular Works Contract. Deletions or addenda should then adapt the General Specifications to the particular Works.

Care must be taken in drafting specifications to ensure that they are not restrictive. In the specification of standards for goods, materials, and workmanship, recognized international standards should be used as much as possible. Where other particular standards are used, whether national standards or other standards, the specifications should state that goods, materials, and workmanship that meet other authoritative standards, and which ensure substantially equal or higher quality than the standards mentioned, will also be acceptable. The following clause may be inserted in the SCC.

Sample Clause: Equivalency of Standards and Codes

Wherever reference is made in the Contract to specific standards and codes to be met by the goods and materials to be furnished, and work performed or tested, the provisions of the latest current edition or revision of the relevant standards and codes in effect shall apply, unless otherwise expressly stated in the Contract. Where such standards and codes are national, or relate to a particular country or region, other authoritative standards that ensure a substantially equal or higher quality than the standards and codes specified will be accepted subject to the Procuring Entity's Representative's prior review and written consent. Differences between the standards specified and the proposed alternative standards shall be fully described in writing by the Contractor and submitted to the Procuring Entity's Representative at least twenty-eight (28) days prior to the date when the Contractor desires the Procuring Entity's Representative's consent. In the event the Procuring Entity's Representative determines that such proposed deviations do not ensure substantially equal or higher quality, the Contractor shall comply with the standards specified in the documents.

These notes are intended only as information for the Procuring Entity or the person

drafting the Bidding Documents. They should not be included in the final Bidding Documents.

Section VII. Drawings

[Insert here a list of Drawings. The actual Drawings, including site plans, should be attached to this section, or annexed in a separate folder.]

GROUND FLOOR PLAN BLOW-UP (MAIN BLDG.)
SCALE 1:70mm

GROUND FLOOR PLAN BLOW-UP (ANNEX BLDG.)
SCALE 1:70mm

SECOND FLOOR PLAN BLOW-UP
SCALE 1:70mm


PERSPECTIVE OF WAITING AREA

	DEPARTMENT OF HEALTH METRO MANILA CENTER FOR HEALTH DEVELOPMENT	PROJECT TITLE PROPOSED EXPANSION AND RENOVATION OF ARSENAL & MARIANO SUPER HEALTH CENTERS & TREATMENT CLINIC	PREPARED BY CHARESTO M. NACHALAD, JAP, RUP	CHECKED BY ANABEL C. BINOYA, CE, RUP	SUBMITTED BY KAREN B. FERNANDEZ, MD, MPH	RECOMMENDED/NO. APPROVAL PRETCHELL P. TOLENTINO, MD, MCHM	APPROVED BY ALELIANNE GRACE P. SUDACAL, MD, MPH, CESE	COORDINATOR BY ESPERANZA ANTA E. ARIAS, MD, MPH	SHEET NO. A-03
			ARCHITECT: HPCDEU	ENGINEER: HPCDEU	MEDICAL OFFICER: HPCDEU	DIRECTOR I	DIRECTOR II	OFF. HEALTH PLAN. OFF.	


GROUND FLOOR PLAN
SCALE 1:100mm

SECOND FLOOR PLAN
SCALE 1:100mm


	DEPARTMENT OF HEALTH METRO MANILA CENTER FOR HEALTH DEVELOPMENT	PROJECT TITLE PROPOSED EXPANSION AND RENOVATION OF ARSENAL & MARIANO SUPER HEALTH CENTERS & TREATMENT CLINIC	PREPARED BY CHARESTO M. NACHALAD, JAP, RUP	CHECKED BY ANABEL C. BINOYA, CE, RUP	SUBMITTED BY KAREN B. FERNANDEZ, MD, MPH	RECOMMENDED/NO. APPROVAL PRETCHELL P. TOLENTINO, MD, MCHM	APPROVED BY ALELIANNE GRACE P. SUDACAL, MD, MPH, CESE	COORDINATOR BY ESPERANZA ANTA E. ARIAS, MD, MPH	SHEET NO. A-02
			ARCHITECT: HPCDEU	ENGINEER: HPCDEU	MEDICAL OFFICER: HPCDEU	DIRECTOR I	DIRECTOR II	OFF. HEALTH PLAN. OFF.	



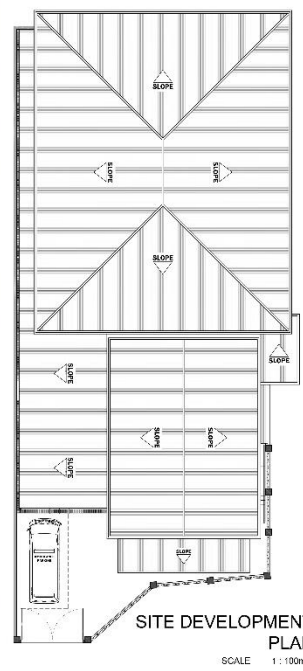
PERSPECTIVE



VICINITY MAP





LOCATION MAP




SITE DEVELOPMENT PLAN
SCALE 1:100mm

TABLE OF CONTENTS	
A-01	• SITE PLAN • SITE LAYOUT • SITE AREA • SITE BOUNDARIES
A-02	• BUILDING FOOTPRINT • BUILDING HEIGHT • BUILDING SETBACKS
A-03	• BUILDING FOOTPRINT • BUILDING HEIGHT • BUILDING SETBACKS • BUILDING MATERIALS
A-04	• BUILDING FOOTPRINT • BUILDING HEIGHT • BUILDING SETBACKS • BUILDING MATERIALS • BUILDING FINISHES
A-05	• BUILDING FOOTPRINT • BUILDING HEIGHT • BUILDING SETBACKS • BUILDING MATERIALS • BUILDING FINISHES • BUILDING UTILITIES
A-06	• BUILDING FOOTPRINT • BUILDING HEIGHT • BUILDING SETBACKS • BUILDING MATERIALS • BUILDING FINISHES • BUILDING UTILITIES • BUILDING LANDSCAPING
A-07	• BUILDING FOOTPRINT • BUILDING HEIGHT • BUILDING SETBACKS • BUILDING MATERIALS • BUILDING FINISHES • BUILDING UTILITIES • BUILDING LANDSCAPING • BUILDING SECURITY
A-08	• SCOPE OF WORK
A-09	• SCOPE OF WORK • SCOPE OF WORK • SCOPE OF WORK • SCOPE OF WORK
A-10	• SCOPE OF WORK • SCOPE OF WORK • SCOPE OF WORK • SCOPE OF WORK • SCOPE OF WORK
A-11	• SCOPE OF WORK • SCOPE OF WORK • SCOPE OF WORK • SCOPE OF WORK • SCOPE OF WORK
A-12	• SCOPE OF WORK • SCOPE OF WORK • SCOPE OF WORK • SCOPE OF WORK • SCOPE OF WORK
A-13	• SCOPE OF WORK • SCOPE OF WORK • SCOPE OF WORK • SCOPE OF WORK • SCOPE OF WORK
A-14	• SCOPE OF WORK • SCOPE OF WORK • SCOPE OF WORK • SCOPE OF WORK • SCOPE OF WORK
S-01	• SCOPE OF WORK • SCOPE OF WORK • SCOPE OF WORK • SCOPE OF WORK • SCOPE OF WORK
S-02	• SCOPE OF WORK • SCOPE OF WORK • SCOPE OF WORK • SCOPE OF WORK • SCOPE OF WORK
E-01	• SCOPE OF WORK • SCOPE OF WORK • SCOPE OF WORK • SCOPE OF WORK • SCOPE OF WORK
E-02	• SCOPE OF WORK • SCOPE OF WORK • SCOPE OF WORK • SCOPE OF WORK • SCOPE OF WORK
E-03	• SCOPE OF WORK • SCOPE OF WORK • SCOPE OF WORK • SCOPE OF WORK • SCOPE OF WORK
P-01	• SCOPE OF WORK • SCOPE OF WORK • SCOPE OF WORK • SCOPE OF WORK • SCOPE OF WORK
P-02	• SCOPE OF WORK • SCOPE OF WORK • SCOPE OF WORK • SCOPE OF WORK • SCOPE OF WORK
P-03	• SCOPE OF WORK • SCOPE OF WORK • SCOPE OF WORK • SCOPE OF WORK • SCOPE OF WORK
P-04	• SCOPE OF WORK • SCOPE OF WORK • SCOPE OF WORK • SCOPE OF WORK • SCOPE OF WORK


	PROJECT TITLE	PREPARED BY	CHECKED BY	SUBMITTED BY	RECOMMENDED BY (APPROVAL)	APPROVED BY	DATE (MM/DD/YYYY)	SHEET NO.
	PROPOSED EXPANSION AND RENOVATION OF ARSENAL & MAKING SUPER HEALTH CENTER & LYING-IN CLINIC	CHRISTINE M. D. MACALALAD, JAP, RMP	ANABEL C. BINOYA, CE, RMP	KAREN B. FERNANDEZ, MD, MPH	PRETCELL P. TOLENTINO, MD, MCHM	ALELI ANNE GRACE P. SUDACAL, MD, MPH, CESE	ESPERANZA ANITA E. ARAS, MD, MPH	A-01



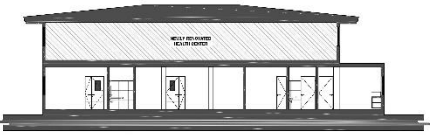
FRONT ELEVATION
SCALE 1:100mm



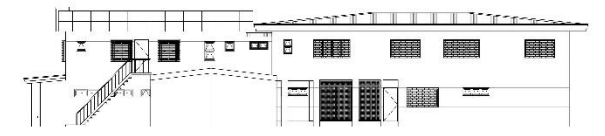
SECTION THRU A-A'
SCALE 1:100mm




LEFT SIDE ELEVATION
SCALE 1:100mm



SECTION THRU B-B'
SCALE 1:100mm




RIGHT SIDE ELEVATION
SCALE 1:100mm

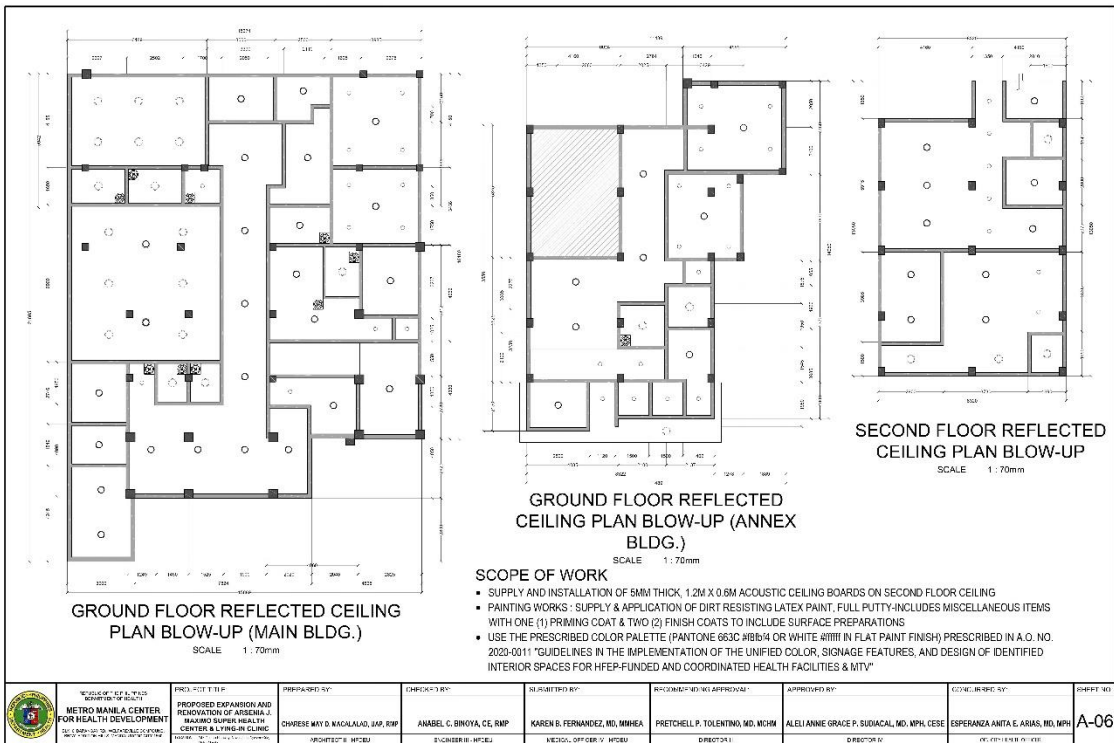
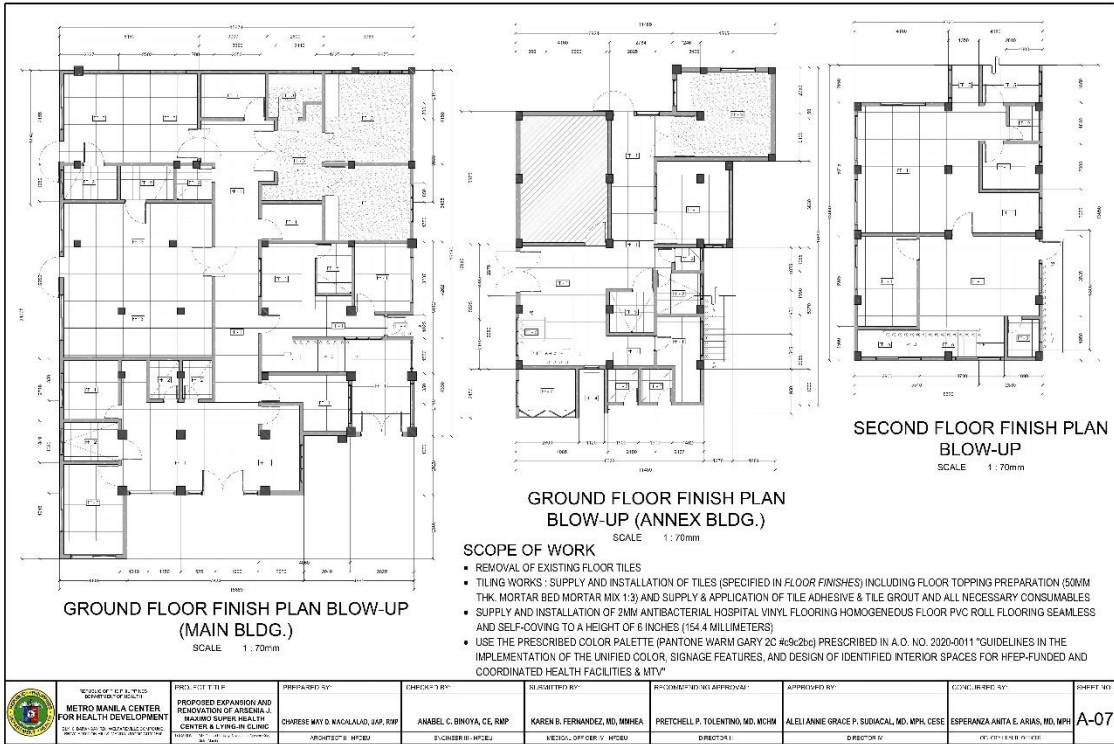


SECTION THRU C-C'
SCALE 1:100mm

SCOPE OF WORK

- PAINTING WORKS (EXTERIOR & INTERIOR); SUPPLY & APPLICATION OF DIRTY RESISTING LATEX PAINT, FULL PUTTY-INCLUDES MISCELLANEOUS ITEMS WITH ONE (1) PRIMING COAT & TWO (2) FINISH COATS TO INCLUDE SURFACE PREPARATIONS
- USE THE PRESCRIBED COLOR PALETTE PRESCRIBED IN A.O. NO. 2020-0011 "GUIDELINES IN THE IMPLEMENTATION OF THE UNIFIED COLOR, SIGNAGE FEATURES, AND DESIGN OF IDENTIFIED INTERIOR SPACES FOR HFEP-FUNDED AND COORDINATED HEALTH FACILITIES AND MEDICAL TRANSPORT VEHICLES"

	PROJECT TITLE	PREPARED BY	CHECKED BY	SUBMITTED BY	RECOMMENDED BY (APPROVAL)	APPROVED BY	DATE (MM/DD/YYYY)	SHEET NO.
	PROPOSED EXPANSION AND RENOVATION OF ARSENAL & MAKING SUPER HEALTH CENTER & LYING-IN CLINIC	CHRISTINE M. D. MACALALAD, JAP, RMP	ANABEL C. BINOYA, CE, RMP	KAREN B. FERNANDEZ, MD, MPH	PRETCELL P. TOLENTINO, MD, MCHM	ALELI ANNE GRACE P. SUDACAL, MD, MPH, CESE	ESPERANZA ANITA E. ARAS, MD, MPH	A-04



FLOOR FINISHES	
FF-1	ACRYLUM X ACRYLUM GLOSSY SPINURE, C. CO. GRABBLE TILES
FF-2	300MM X 300MM LENS 4370 TL-TS
FF-3	2MM THK. POLYCHLORIDE ANTIBACTERIAL VINYL SHEET
FF-4	WATERBOND FLOORING
FF-5	ACRYLUM X ACRYLUM M. ST. 1885
FF-6	600MM X 600MM UNGLAZED TILES

SCOPE OF WORK

- CEILING WORKS: REMOVAL OF EXISTING ACOUSTIC CEILING AND BOARDS AND CEILING FRAME AND LIGHTING
- SUPPLY AND INSTALLATION OF CEILING BOARDS, 5MM THK. FIBER CEMENT, 4' X 8' ON METAL FURRING SPACED @ 400MM, OC BOTH WAYS INCLUDING ACCESSORIES AND ALL NECESSARY CONSUMABLES
- SUPPLY AND INSTALLATION OF (a) CEILING RECEPTACLE 4 1/4" DIAMETER WITH SCREW E-27 BULB SOCKET RECEPTACLE WITH 32W CIRCULAR LED TUBE DAY LIGHT AND ALL NECESSARY CONSUMABLES AND USE REUSABLE LIGHTING FIXTURE AND (b) 6" Ø PINLIGHT HOUSING RECESSED BEEHIVE WITH 20W LED BULB DAY LIGHT AND ALL NECESSARY CONSUMABLES AND USE REUSABLE LIGHTING FIXTURE
- PAINTING WORKS: SUPPLY & APPLICATION OF DIRT RESISTING LATEX PAINT, FULL PUTTY-INCLUDES MISCELLANEOUS ITEMS WITH ONE (1) PRIMING COAT & TWO (2) FINISH COATS TO INCLUDE SURFACE PREPARATIONS
- USE THE PRESCRIBED COLOR PALETTE (PANTONE 653C #8904 OR WHITE #1111 IN FLAT PAINT FINISH) PRESCRIBED IN A.O. NO. 2020-0011 "GUIDELINES IN THE IMPLEMENTATION OF THE UNIFIED COLOR, SIGNAGE FEATURES, AND DESIGN OF IDENTIFIED INTERIOR SPACES FOR HEP-FUNDED AND COORDINATED HEALTH FACILITIES & MTV"

GROUND FLOOR REFLECTED CEILING PLAN
SCALE 1:100mm

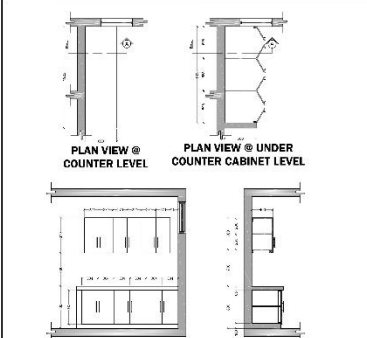
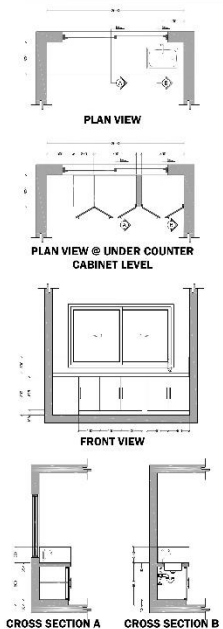
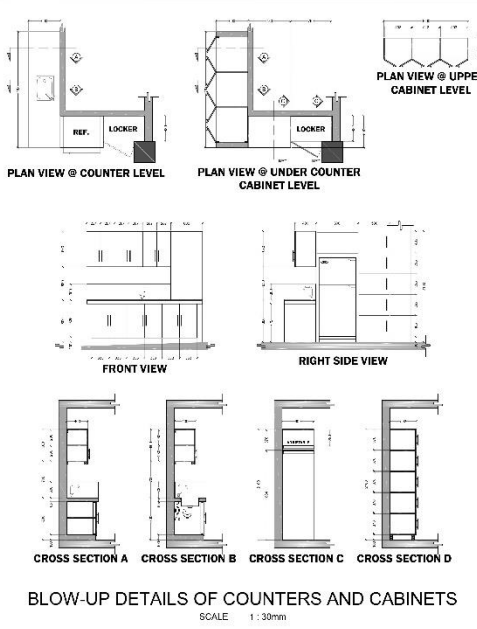
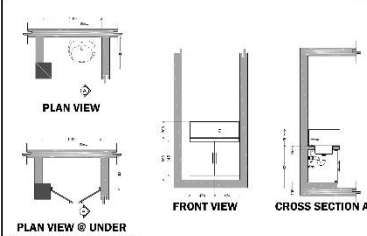


GROUND FLOOR FINISH PLAN
SCALE 1:100mm

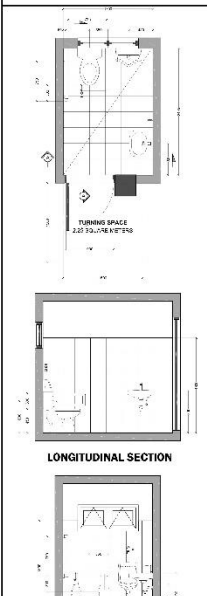
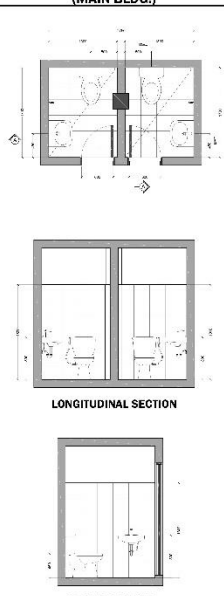
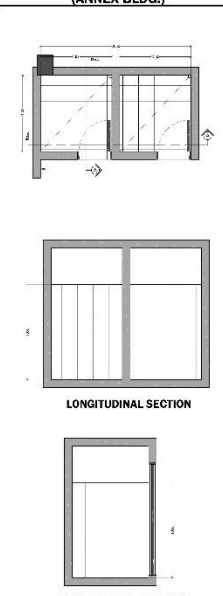
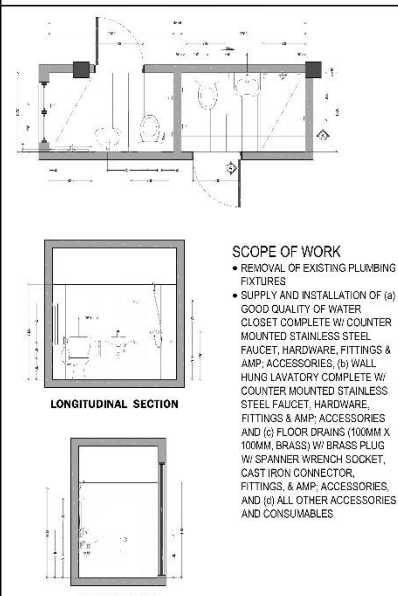

	PROJECT TITLE	PROPOSED EXPANSION AND RENOVATION OF ARSENAL 2 MAKING SUPER HEALTH CENTER & LYING-IN CLINIC	PREPARED BY	CHWEE MYI D. MACALALAD, JAP, RUP	CHECKED BY	ANABEL C. BINOYA, CE, RUP	SUBMITTED BY	KAREN B. FERNANDEZ, MD, MHHA	RECOMMENDED BY APPROVAL	PRETCHELL P. TOLENTINO, MD, MCHM	APPROVED BY	ALELI ANNE GRACE P. SUDACAL, MD, MPH, CESE	COORDINATOR	ESPERANZA ANITA E. ARIAS, MD, MPH	SHEET NO.	A-05
	PROJECT NO.	HEP-2020-0011	DATE	08/05/2020	PROJECT NO.	HEP-2020-0011	DATE	08/05/2020	PROJECT NO.	HEP-2020-0011	DATE	08/05/2020	PROJECT NO.	HEP-2020-0011	DATE	08/05/2020

SCHEDULE OF DOORS AND WINDOWS
SCALE 1:40mm

TWO (2) TRACK ALUMINUM SLIDING WINDOW W101	TWO (2) TRACK ALUMINUM SLIDING WINDOW W102	THREE (3) TRACK ALUMINUM SLIDING WINDOW W103	TWO (2) TRACK ALUMINUM SLIDING WINDOW W104	THREE (3) PANEL ALUMINUM SLIDING WINDOW W105	DOUBLE PANEL ALUMINUM SLIDING WINDOW W106	SINGLE PANEL ALUMINUM SLIDING WINDOW W107	TWO (2) PANEL ALUMINUM VERTICAL SLIDING WINDOW W108	TWO (2) PANEL ALUMINUM VERTICAL SLIDING WINDOW W109
FOUR (4) PANEL ALUMINUM VERTICAL SLIDING WINDOW W110	ALUMINUM BOX LOUVERS W111	ALUMINUM BOX LOUVERS W112	WINDOW GRILLE W113	DOUBLE SWING ALUMINUM GLASS DOOR (VERTICAL, INSWING) D101	DOUBLE SWING ALUMINUM GLASS DOOR (VERTICAL, INSWING) D102	HOLLOW CORE STEEL DOOR D103	HOLLOW CORE STEEL DOOR D104	FOUR (4) PANEL FIBROGLASS STEEL LOUVER DOOR D105
STEEL LOUVER DOOR D106	HOLLOW CORE FLUSH DOOR D107	HOLLOW CORE FLUSH DOOR D108	HOLLOW CORE FLUSH DOOR D109	PVC DOOR WITH LOUVER D110	HOLLOW CORE FLUSH DOOR (FIBROGLASS) D111	STEEL FIRE DOOR D112	DOUBLE SWING HOLLOW CORE FLUSH DOOR WITH FIBROGLASS PANEL, FIBROGLASS & FIBROGLASS PANEL D113	DOUBLE SWING HOLLOW CORE FLUSH DOOR WITH FIBROGLASS PANEL, FIBROGLASS & FIBROGLASS PANEL D114

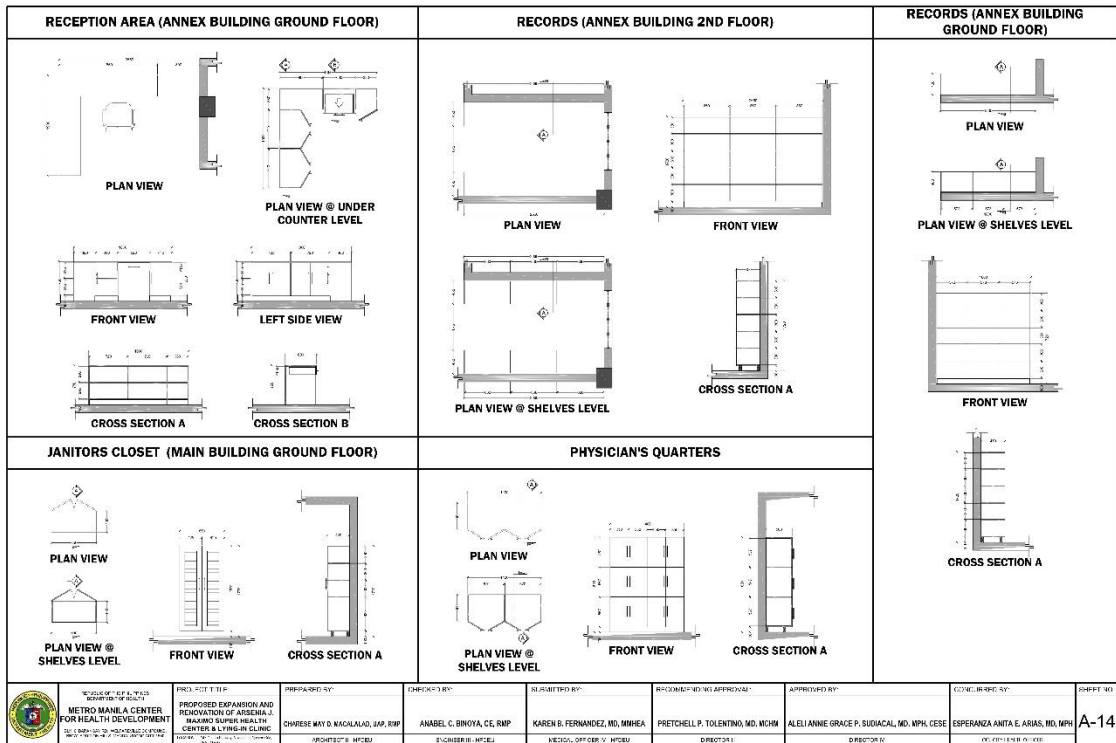
	PROJECT TITLE	PROPOSED EXPANSION AND RENOVATION OF ARSENAL 2 MAKING SUPER HEALTH CENTER & LYING-IN CLINIC	PREPARED BY	CHWEE MYI D. MACALALAD, JAP, RUP	CHECKED BY	ANABEL C. BINOYA, CE, RUP	SUBMITTED BY	KAREN B. FERNANDEZ, MD, MHHA	RECOMMENDED BY APPROVAL	PRETCHELL P. TOLENTINO, MD, MCHM	APPROVED BY	ALELI ANNE GRACE P. SUDACAL, MD, MPH, CESE	COORDINATOR	ESPERANZA ANITA E. ARIAS, MD, MPH	SHEET NO.	A-08
	PROJECT NO.	HEP-2020-0011	DATE	08/05/2020	PROJECT NO.	HEP-2020-0011	DATE	08/05/2020	PROJECT NO.	HEP-2020-0011	DATE	08/05/2020	PROJECT NO.	HEP-2020-0011	DATE	08/05/2020

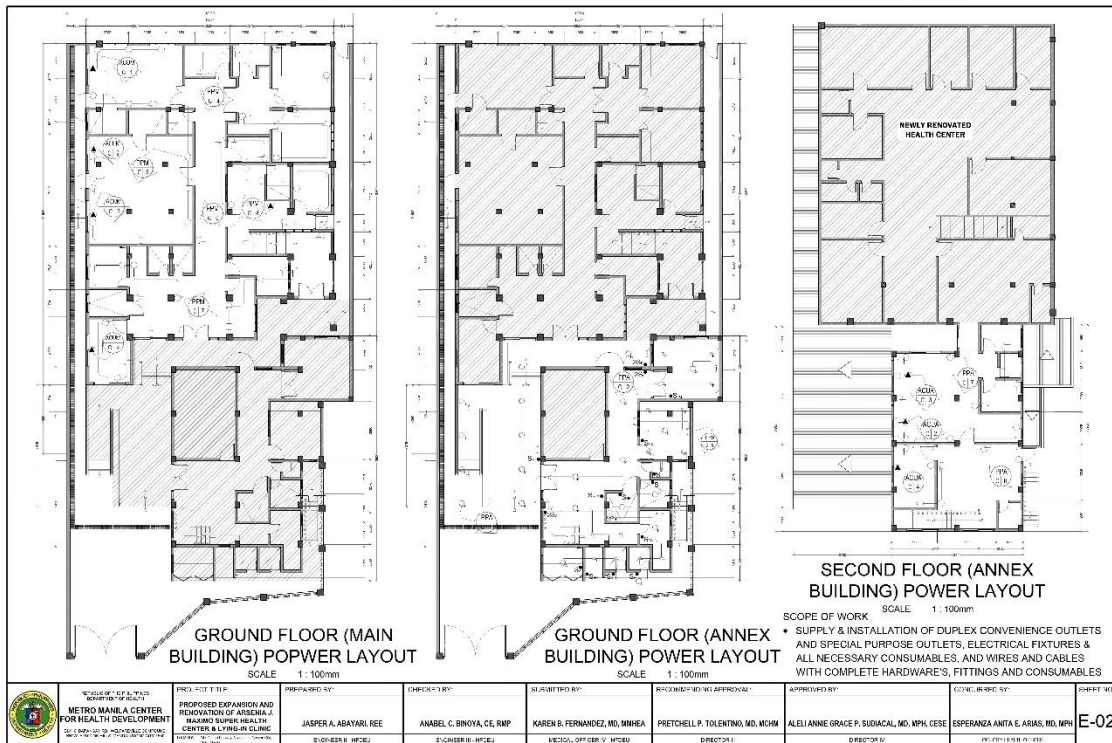
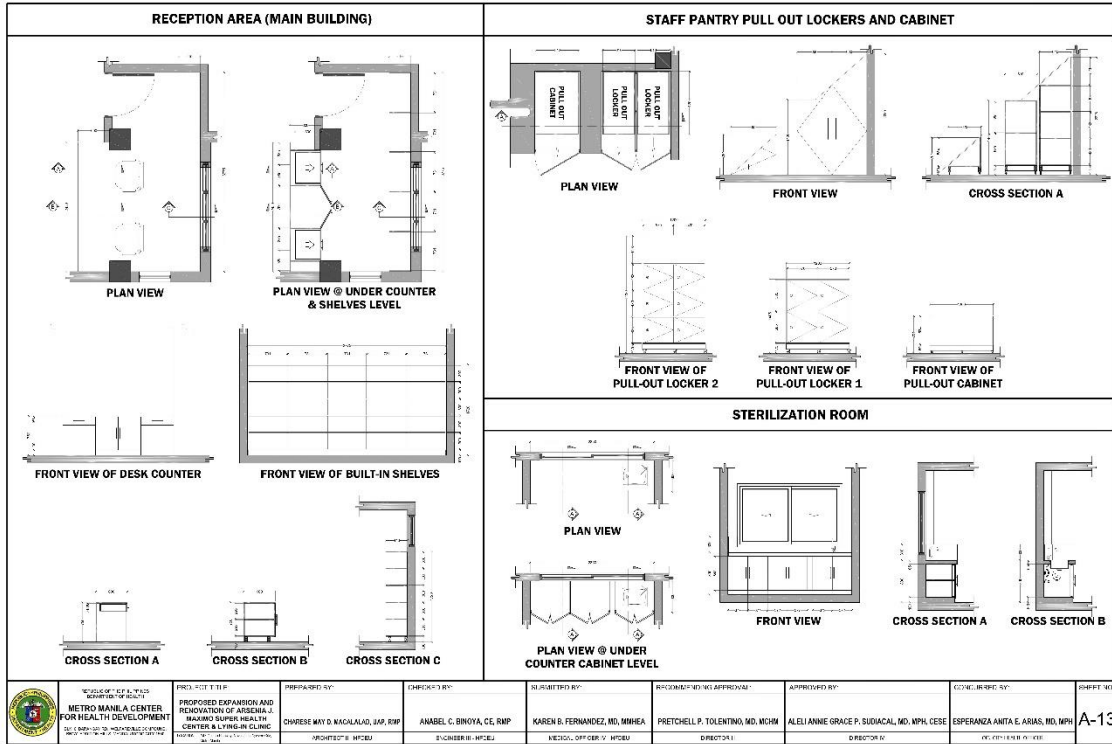
BIRTHING ROOM	CONSULTATION ROOM (MAIN BUILDING)	STAFF PANTRY (MAIN BUILDING)
 <p>PLAN VIEW @ COUNTER LEVEL</p> <p>PLAN VIEW @ UNDER COUNTER CABINET LEVEL</p> <p>FRONT VIEW</p> <p>CROSS SECTION A</p>	 <p>PLAN VIEW</p> <p>PLAN VIEW @ UNDER COUNTER CABINET LEVEL</p> <p>FRONT VIEW</p> <p>CROSS SECTION A</p>	 <p>PLAN VIEW @ COUNTER LEVEL</p> <p>PLAN VIEW @ UNDER COUNTER CABINET LEVEL</p> <p>FRONT VIEW</p> <p>RIGHT SIDE VIEW</p> <p>CROSS SECTION A</p> <p>CROSS SECTION B</p> <p>CROSS SECTION C</p> <p>CROSS SECTION D</p>
BREASTFEEDING AREA		<p>BLOW-UP DETAILS OF COUNTERS AND CABINETS</p> <p>SCALE 1 : 30mm</p>
 <p>PLAN VIEW</p> <p>FRONT VIEW</p> <p>CROSS SECTION A</p>	 <p>CROSS SECTION A</p> <p>CROSS SECTION B</p>	
 <p>PROPOSED EXPANSION AND RENOVATION OF ARSENAL & MAKING SUPER HEALTH CENTER & LYING-IN CLINIC</p>	<p>PROJ. SITE TITLE</p> <p>PROPOSED EXPANSION AND RENOVATION OF ARSENAL & MAKING SUPER HEALTH CENTER & LYING-IN CLINIC</p>	<p>PREPARED BY: CHWEESE WIT D. MACALALAD, JAP, RMP</p> <p>CHECKED BY: ANABEL C. BINOYA, CE, RMP</p> <p>SUBMITTED BY: KAREN B. FERNANDEZ, MD, MPH/HA</p> <p>RECOMMENDED BY APPROVAL: PRETCHELL P. TOLENTINO, MD, MPH/HA</p> <p>APPROVED BY: ALELI ANNE GRACE P. SUDACAL, MD, MPH, CESE</p> <p>COORDINATOR: ESPERANZA ANITA E. ARIAS, MD, MPH</p> <p>DATE: 07/11/2018 09:00</p> <p>SHEET NO: A-11</p>

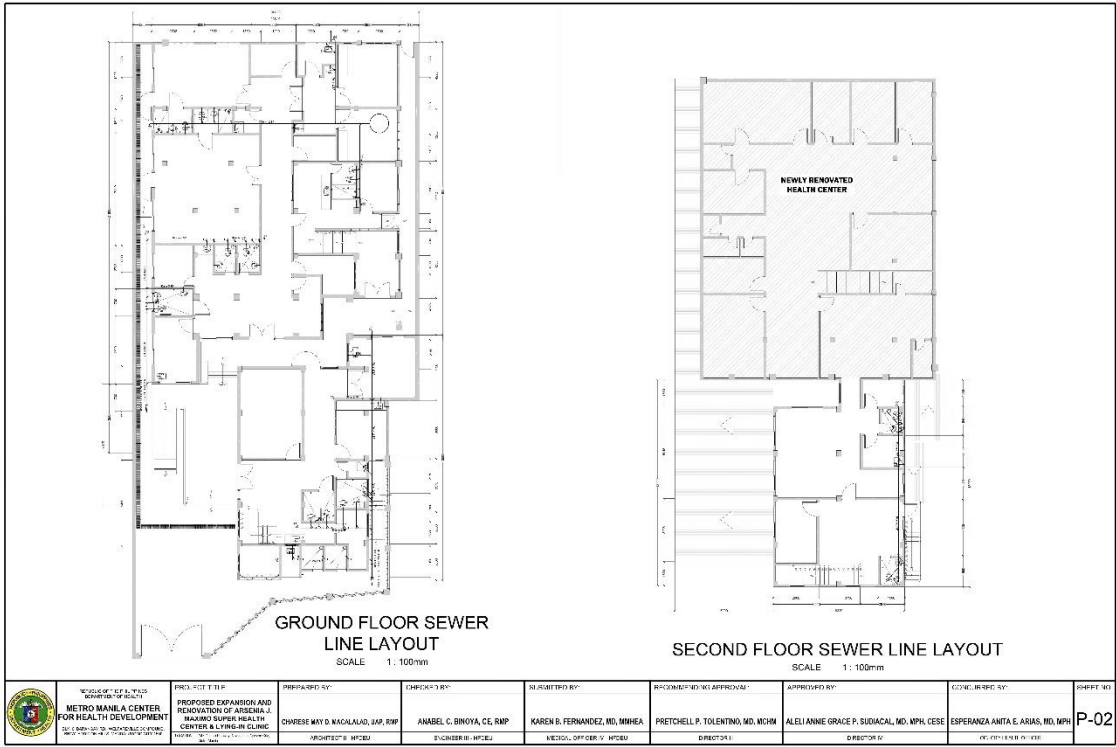
PWD TOILET (MAIN BLDG.)	MALE AND FEMALE TOILET (MAIN BLDG.)	WASTE STORAGE ROOMS (ANNEX BLDG.)	WARD 1 & 2 TOILETS (MAIN BLDG.)
 <p>TURNING SPACE 220 SQUARE METERS</p> <p>LONGITUDINAL SECTION</p> <p>CROSS SECTION</p>	 <p>LONGITUDINAL SECTION</p> <p>CROSS SECTION</p>	 <p>LONGITUDINAL SECTION</p> <p>LONGITUDINAL SECTION</p>	 <p>LONGITUDINAL SECTION</p> <p>CROSS SECTION</p>
<p>BLOW-UP DETAILS OF TOILETS AND WASTE STORAGE ROOMS</p> <p>SCALE 1 : 30mm</p>			
 <p>PROPOSED EXPANSION AND RENOVATION OF ARSENAL & MAKING SUPER HEALTH CENTER & LYING-IN CLINIC</p>	<p>PROJ. SITE TITLE</p> <p>PROPOSED EXPANSION AND RENOVATION OF ARSENAL & MAKING SUPER HEALTH CENTER & LYING-IN CLINIC</p>	<p>PREPARED BY: CHWEESE WIT D. MACALALAD, JAP, RMP</p> <p>CHECKED BY: ANABEL C. BINOYA, CE, RMP</p> <p>SUBMITTED BY: KAREN B. FERNANDEZ, MD, MPH/HA</p>	<p>RECOMMENDED BY APPROVAL: PRETCHELL P. TOLENTINO, MD, MPH/HA</p> <p>APPROVED BY: ALELI ANNE GRACE P. SUDACAL, MD, MPH, CESE</p> <p>COORDINATOR: ESPERANZA ANITA E. ARIAS, MD, MPH</p> <p>DATE: 07/11/2018 09:00</p> <p>SHEET NO: A-10</p>

SCOPE OF WORK	STAFF TOILET (SECOND FLR. ANNEX BLDG.)	COMMON TOILET (SECOND FLR. ANNEX BLDG.)	COMMON STAFF TOILET (GROUND FLR. ANNEX BLDG.)	STAFF TOILET (MAIN BLDG.)	PWD TOILET (GROUND FLR. ANNEX BLDG.)								
<ul style="list-style-type: none"> PAINTING WORKS: SUPPLY & APPLICATION OF DIRTY RESISTING LATEX PAINT, FULL PUTTY-INCLUDES MISCELLANEOUS ITEMS WITH ONE (1) PRIMING COAT & TWO (2) FINISH COATS TO INCLUDE SURFACE PREPARATIONS TILING WORKS: SUPPLY AND INSTALLATION OF TILES (SPECIFIED IN FLOOR FINISHES) INCLUDING FLOOR TOPPING PREPARATION (50MM THK. MORTAR BED MORTAR MIX 1:3) AND SUPPLY & APPLICATION OF TILE ADHESIVE & TILE GROUT AND ALL NECESSARY CONSUMABLES USE THE PRESCRIBED COLOR PALETTE (PANTONE WARM GRAY 2C #69C2bc FOR FLOOR & PANTONE 5807C #65dbb8 FOR WALLS) PRESCRIBED IN A.O. NO. 2020-0011 "GUIDELINES IN THE IMPLEMENTATION OF THE UNIFIED COLOR, SIGNAGE FEATURES, AND DESIGN OF IDENTIFIED INTERIOR SPACES FOR HFP-FUNDED AND COORDINATED HEALTH FACILITIES & MTI" 													
	CROSS SECTION	CROSS SECTION	LONGITUDINAL SECTION	CROSS SECTION	LONGITUDINAL SECTION								
	LONGITUDINAL SECTION	LONGITUDINAL SECTION	CROSS SECTION	LONGITUDINAL SECTION	CROSS SECTION								
	BLOW-UP DETAILS OF TOILETS												
	SCALE: 1:30mm												
	<table border="1" style="width: 100%; border-collapse: collapse;"> <tr> <td style="width: 15%;"></td> <td style="width: 15%;">PROJECT TITLE PROPOSED EXPANSION AND RENOVATION OF ARSENAL & MAKING SUPER HEALTH CENTER & LYING-IN CLINIC</td> <td style="width: 15%;">PREPARED BY CHRISTE MARY D. MACALALAD, JAP, RMP</td> <td style="width: 15%;">CHECKED BY ANABEL C. BINOYA, CE, RMP</td> <td style="width: 15%;">SUBMITTED BY KAREN B. FERNANDEZ, MD, MPH</td> <td style="width: 15%;">RECOMMENDED BY APPROVAL PRETCHELL P. TOLENTINO, MD, MPH, MCHM</td> <td style="width: 15%;">APPROVED BY ALELI ANNE GRACE P. SIDACAL, MD, MPH, CESE</td> <td style="width: 15%;">COORDINATOR ESPERANZA ANITA E. ARIAS, MD, MPH</td> <td style="width: 15%;">SHEET NO. A-09</td> </tr> </table>						PROJECT TITLE PROPOSED EXPANSION AND RENOVATION OF ARSENAL & MAKING SUPER HEALTH CENTER & LYING-IN CLINIC	PREPARED BY CHRISTE MARY D. MACALALAD, JAP, RMP	CHECKED BY ANABEL C. BINOYA, CE, RMP	SUBMITTED BY KAREN B. FERNANDEZ, MD, MPH	RECOMMENDED BY APPROVAL PRETCHELL P. TOLENTINO, MD, MPH, MCHM	APPROVED BY ALELI ANNE GRACE P. SIDACAL, MD, MPH, CESE	COORDINATOR ESPERANZA ANITA E. ARIAS, MD, MPH
	PROJECT TITLE PROPOSED EXPANSION AND RENOVATION OF ARSENAL & MAKING SUPER HEALTH CENTER & LYING-IN CLINIC	PREPARED BY CHRISTE MARY D. MACALALAD, JAP, RMP	CHECKED BY ANABEL C. BINOYA, CE, RMP	SUBMITTED BY KAREN B. FERNANDEZ, MD, MPH	RECOMMENDED BY APPROVAL PRETCHELL P. TOLENTINO, MD, MPH, MCHM	APPROVED BY ALELI ANNE GRACE P. SIDACAL, MD, MPH, CESE	COORDINATOR ESPERANZA ANITA E. ARIAS, MD, MPH	SHEET NO. A-09					

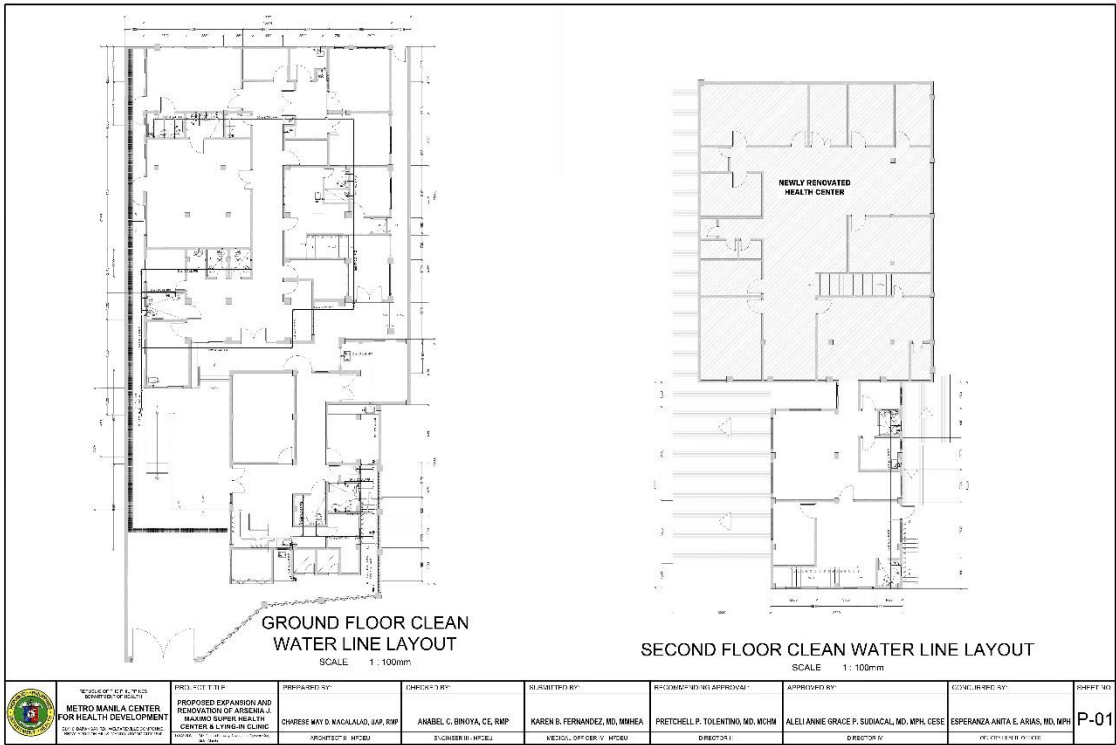
MINOR SURGICAL ROOM	STAFF PANTRY (ANNEX BUILDING SECOND FLOOR)	SPUTUM COLLECTION & RECEIVING AREA									
PLAN VIEW @ COUNTER LEVEL	PLAN VIEW	PLAN VIEW									
PLAN VIEW @ UNDER COUNTER CABINET LEVEL	PLAN VIEW @ UNDER COUNTER CABINET LEVEL	PLAN VIEW @ UNDER COUNTER CABINET LEVEL									
CROSS SECTION A	CROSS SECTION A	CROSS SECTION A									
CROSS SECTION B	CROSS SECTION B	CROSS SECTION A									
CONSULTATION ROOM (ANNEX BUILDING)											
PLAN VIEW @ COUNTER LEVEL											
PLAN VIEW @ UNDER COUNTER CABINET LEVEL											
PLAN VIEW @ UPPER CABINET LEVEL											
CROSS SECTION A											
CROSS SECTION B											
CROSS SECTION C											
<p>SCOPE OF WORK</p> <ul style="list-style-type: none"> SUPPLY AND FABRICATION OF COUNTER CABINET, DESK CABINET, OVERHEAD CABINET AND OPEN SHELVES CABINET; 3/4" PLYWOOD FOR CABINET FRAMEWORK, 1/4" PLYWOOD FOR CABINET BACK PANEL & 100mm THK MASONRY DIVIDER AND BASE FOR COUNTERS SUPPLY AND INSTALLATION OF GOOD QUALITY OF FAUCET AND KITCHEN SINK; TILING WORKS: SUPPLY AND INSTALLATION OF 600MM X 600MM SYNTHETIC GRANITE TILES INCLUDING TOPPING PREPARATION (50MM THK. MORTAR BED MORTAR MIX 1:3) AND SUPPLY & APPLICATION OF TILE ADHESIVE & EPOXY GROUT AND ALL NECESSARY CONSUMABLES USE THE PRESCRIBED COLOR PALETTE (PANTONE WARM GRAY 2C #69C2bc FOR FLOOR & PANTONE 5807C #65dbb8 FOR WALLS) PRESCRIBED IN A.O. NO. 2020-0011 "GUIDELINES IN THE IMPLEMENTATION OF THE UNIFIED COLOR, SIGNAGE FEATURES, AND DESIGN OF IDENTIFIED INTERIOR SPACES FOR HFP-FUNDED AND COORDINATED HEALTH FACILITIES & MTI" 											
<table border="1" style="width: 100%; border-collapse: collapse;"> <tr> <td style="width: 15%;"></td> <td style="width: 15%;">PROJECT TITLE PROPOSED EXPANSION AND RENOVATION OF ARSENAL & MAKING SUPER HEALTH CENTER & LYING-IN CLINIC</td> <td style="width: 15%;">PREPARED BY CHRISTE MARY D. MACALALAD, JAP, RMP</td> <td style="width: 15%;">CHECKED BY ANABEL C. BINOYA, CE, RMP</td> <td style="width: 15%;">SUBMITTED BY KAREN B. FERNANDEZ, MD, MPH</td> <td style="width: 15%;">RECOMMENDED BY APPROVAL PRETCHELL P. TOLENTINO, MD, MPH, MCHM</td> <td style="width: 15%;">APPROVED BY ALELI ANNE GRACE P. SIDACAL, MD, MPH, CESE</td> <td style="width: 15%;">COORDINATOR ESPERANZA ANITA E. ARIAS, MD, MPH</td> <td style="width: 15%;">SHEET NO. A-12</td> </tr> </table>				PROJECT TITLE PROPOSED EXPANSION AND RENOVATION OF ARSENAL & MAKING SUPER HEALTH CENTER & LYING-IN CLINIC	PREPARED BY CHRISTE MARY D. MACALALAD, JAP, RMP	CHECKED BY ANABEL C. BINOYA, CE, RMP	SUBMITTED BY KAREN B. FERNANDEZ, MD, MPH	RECOMMENDED BY APPROVAL PRETCHELL P. TOLENTINO, MD, MPH, MCHM	APPROVED BY ALELI ANNE GRACE P. SIDACAL, MD, MPH, CESE	COORDINATOR ESPERANZA ANITA E. ARIAS, MD, MPH	SHEET NO. A-12
	PROJECT TITLE PROPOSED EXPANSION AND RENOVATION OF ARSENAL & MAKING SUPER HEALTH CENTER & LYING-IN CLINIC	PREPARED BY CHRISTE MARY D. MACALALAD, JAP, RMP	CHECKED BY ANABEL C. BINOYA, CE, RMP	SUBMITTED BY KAREN B. FERNANDEZ, MD, MPH	RECOMMENDED BY APPROVAL PRETCHELL P. TOLENTINO, MD, MPH, MCHM	APPROVED BY ALELI ANNE GRACE P. SIDACAL, MD, MPH, CESE	COORDINATOR ESPERANZA ANITA E. ARIAS, MD, MPH	SHEET NO. A-12			







 DEPARTMENT OF HEALTH METRO MANILA CENTER FOR HEALTH DEVELOPMENT <small>1500 SERRAVALLO STREET, PASAY CITY, METRO MANILA 1306 PHILIPPINES</small>	PROJECT TITLE PROPOSED EXPANSION AND RENOVATION OF ARSENAL & MAKING SUPER HEALTH CENTER & LYING-IN CLINIC <small>PROJECT NO. 100-11-10-100-000000</small>	PREPARED BY CHERESE MITO D. MACALALAD, JAP, RUP	CHECKED BY ANABEL C. BINOYA, CE, RUP	SUBMITTED BY KAREN B. FERNANDEZ, MD, MPH	RECOMMENDED BY APPROVAL FRETCHELL P. TOLENTINO, MD, MCHM	CONCURRENCE BY ALELI ANNE GRACE P. SUDACAL, MD, MPH, CESE	SHEET NO. P-02 <small>OF 011-14-10-10-100-000000</small>
		<small>PROFESSOR & MCEBU</small>	<small>ENGINEER & MCEBU</small>	<small>MEICAL OFFICER & MCEBU</small>	<small>DIRECTOR</small>	<small>DIRECTOR</small>	



 DEPARTMENT OF HEALTH METRO MANILA CENTER FOR HEALTH DEVELOPMENT <small>1500 SERRAVALLO STREET, PASAY CITY, METRO MANILA 1306 PHILIPPINES</small>	PROJECT TITLE PROPOSED EXPANSION AND RENOVATION OF ARSENAL & MAKING SUPER HEALTH CENTER & LYING-IN CLINIC <small>PROJECT NO. 100-11-10-10-100-000000</small>	PREPARED BY CHERESE MITO D. MACALALAD, JAP, RUP	CHECKED BY ANABEL C. BINOYA, CE, RUP	SUBMITTED BY KAREN B. FERNANDEZ, MD, MPH	RECOMMENDED BY APPROVAL FRETCHELL P. TOLENTINO, MD, MCHM	CONCURRENCE BY ALELI ANNE GRACE P. SUDACAL, MD, MPH, CESE	SHEET NO. P-01 <small>OF 011-14-10-10-100-000000</small>
		<small>PROFESSOR & MCEBU</small>	<small>ENGINEER & MCEBU</small>	<small>MEICAL OFFICER & MCEBU</small>	<small>DIRECTOR</small>	<small>DIRECTOR</small>	

TYPICAL FOOTING DETAILS

FOOTING SCHEDULE (F₁=3,000 PSI, F₂=40,000 PSI)

MEMBER	1	2	3	4	5	6	7	8	9	10
DESCRIPTION	FOOTING	FOOTING	FOOTING	FOOTING	FOOTING	FOOTING	FOOTING	FOOTING	FOOTING	FOOTING
SECTION	1	2	3	4	5	6	7	8	9	10

ELEVATED WALKWAY DETAILS

SECTION THRU 'A-A'

SECTION THRU 'B-B'

METAL DECK SCHEDULE
(F₁=3,000 PSI, F₂=40,000 PSI)

MARK	THICKNESS (IN)	SPACING (IN)	WAVE	WAVE	WAVE
S-1	1/4"	24"	40000	PD	1/4"

1) SEE SHEET FOR ALL DIMENSIONS.
2) REFER TO SHEET FOR ALL DIMENSIONS.
3) REFER TO SHEET FOR ALL DIMENSIONS.

BP-1 DETAILS

FOUNDATION PLAN (WAITING AREA)

ROOFING PLAN (WAITING AREA)

BP-2 DETAILS

SECTION THRU 'A-A'

SECTION THRU 'B-B'

BP-3 DETAILS

SECTION THRU 'A-A'

SECTION THRU 'B-B'

BP-4 DETAILS

SECTION THRU 'A-A'

SECTION THRU 'B-B'

STEEL COLUMN AND RAFTER SCHEDULE

MARK	ASS. TO	SECTION	THICKNESS
S-1	1/4"	40000	1/4"
S-2	1/4"	40000	1/4"
S-3	1/4"	40000	1/4"
S-4	1/4"	40000	1/4"
S-5	1/4"	40000	1/4"

METRO MAIN & CENTER FOR HEALTH DEVELOPMENT

PROPOSED EXPANSION AND RENOVATION OF ARSENA J. BAKING SUPER HEALTH CENTER & LYING-IN CLINIC

PREPARED BY: IRVIN KEYZER R. MANALO, RCE, RMP

CHECKED BY: ANGEL C. BINOYA, CE, RMP

SUBMITTED BY: KAREN B. FERNANDEZ, MD, MPH, MHA

RECOMMENDED BY: PRETCHELL P. TOLENTINO, MD, MCHM

APPROVED BY: ALELI ANNIE GRACE P. SUDACAL, MD, MPH, CESC

CONCURRED BY: ESPERANZA ANTA E. ARIAS, MD, MPH

SHEET NO: **S-02**

Section VIII. Bill of Quantities

Notes on the Bill of Quantities

Objectives

The objectives of the Bill of Quantities are:

- a. to provide sufficient information on the quantities of Works to be performed to enable Bids to be prepared efficiently and accurately; and
- b. when a Contract has been entered into, to provide a priced Bill of Quantities for use in the periodic valuation of Works executed.

In order to attain these objectives, Works should be itemized in the Bill of Quantities in sufficient detail to distinguish between the different classes of Works, or between Works of the same nature carried out in different locations or in other circumstances which may give rise to different considerations of cost. Consistent with these requirements, the layout and content of the Bill of Quantities should be as simple and brief as possible.

Daywork Schedule

A Daywork Schedule should be included only if the probability of unforeseen work, outside the items included in the Bill of Quantities, is high. To facilitate checking by the Entity of the realism of rates quoted by the Bidders, the Daywork Schedule should normally comprise the following:

- a. A list of the various classes of labor, materials, and Constructional Plant for which basic daywork rates or prices are to be inserted by the Bidder, together with a statement of the conditions under which the Contractor will be paid for work executed on a daywork basis.
- b. Nominal quantities for each item of Daywork, to be priced by each Bidder at Daywork rates as Bid. The rate to be entered by the Bidder against each basic Daywork item should include the Contractor's profit, overheads, supervision, and other charges.

Provisional Sums

A general provision for physical contingencies (quantity overruns) may be made by including a provisional sum in the Summary Bill of Quantities. Similarly, a contingency allowance for possible price increases should be provided as a provisional sum in the Summary Bill of Quantities. The inclusion of such provisional sums often facilitates budgetary approval by avoiding the need to request periodic supplementary approvals as the future need arises. Where such provisional sums or contingency allowances are used, the SCC should state the manner in which they will be used, and under whose authority (usually the Procuring Entity's Representative's).

The estimated cost of specialized work to be carried out, or of special goods to be supplied, by other contractors should be indicated in the relevant part of the Bill of Quantities as a particular provisional sum with an appropriate brief description. A separate procurement procedure is normally carried out by the Procuring Entity to select such specialized contractors. To provide an element of competition among the Bidders in respect of any facilities, amenities, attendance, etc., to be provided by the successful Bidder as prime Contractor for the use and convenience of the specialist contractors, each related provisional sum should be followed by an item in the Bill of Quantities inviting the Bidder to quote a sum for such amenities, facilities, attendance, etc.

Signature Box

A signature box shall be added at the bottom of each page of the Bill of Quantities where the authorized representative of the Bidder shall affix his signature. Failure of the authorized representative to sign each and every page of the Bill of Quantities shall be a cause for rejection of his bid.

These Notes for Preparing a Bill of Quantities are intended only as information for the Procuring Entity or the person drafting the Bidding Documents. They should not be included in the final documents.

PROJEC Proposed Expansion and Renovation of Arsenia J. Maximo Super Health Center and
T : Lying in Clinic
LOCATI 247 Quirino Highway, Novaliches,
ON : Quezon City

DETAILED COST ESTIMATES

Item No.	DESCRIPTION	QTY	UNIT	UNIT COST
(1)	(2)	(3)	(4)	(12) (11)/(3)
I	GENERAL REQUIREMENTS			
1	Mobilization and Demobilization	1.00	lot	
2	Rental of Equipment	1.00	lot	
3	Rental of Scaffoldings	20.00	sets	
4	Billboard secured with Frames (COA Format: 8 ft x 8 ft)	1.00	lot	

5	Occupational Safety and Health Requirements	4.00	mos	
6	Temporary Facilities, Warehouses, Perimeter Fences/ Safety Nets	1.00	lot	
7	Permit and Clearances	1.00	lot	
Sub-Total I				
II	PRE CONSTRUCTION WORKS			
1	Demolition of Existing Concrete Wall	247.20	sq.m	
2	Chipping of Existing Floor Tiles	586.12	sq.m	
3	Removal of Existing Doors and Jambs	1.00	lot	
4	Removal of Existing Windows	1.00	lot	
5	Removal of Existing Plumbing Fixtures	1.00	lot	
6	Removal of Existing Electrical Wires	1.00	lot	
7	Removal of Existing Acoustic Ceiling Boards and Ceiling Frame	437.30	sq.m	
8	Removal of Existing Roofing Sheets and Roofing Accessories	1.00	lot	
9	Removal of Existing Panel Box	1.00	lot	
10	Chipping for Electrical Rerouting	1.00	lot	
11	Chipping for Plumbing Pipes	1.00	lot	
12	Removal For Existing Lightings	1.00	lot	
13	Trenching for Pipes / Storm Drainage	1.00	cu.m	
14	Backfilling and Compaction	1.18	cu.m	
15	Cleaning, hauling and disposal of demolished materials/waste material	5.00	truckload	
17	Earthfill	2.00	cu.m	
18	Sand Bedding	1.00	cu.m	
19	Pest Control and Termite Proofing	248.00	sq.m	
Sub-Total II				

III	CONCRETE WORKS			
	<i>Includes sink counter and the likes</i>			
1	Cement	142.97	bags	
2	Sand	7.94	cu.m	
3	Gravel	15.89	cu.m	
	Sub-Total III			
IV	FORMWORKS			
A.	Plywood Forms			
1	Ordinary Plywood, 1/4" thk x 4' x 8'	39.00	sheets	
B.	Lumber Bracing and Supports			
1	Form, Lumber, 2" x 2" x 12'	163.00	bd.ft.	
2	Common Wire Nails, Assorted	8.75	kgs.	
3	Tie Wire, G.I., Gauge 16	6.59	kgs.	
	Sub-Total IV			
V	STEEL REINFORCEMENTS			
	<i>including all necessary consumables and hardware</i>			
1	Steel deck	5.90	sq.m	
2	Reinforcing Steel Bar, 16mmØ x 6.00m @ Grade 40	236.70	kgs.	
3	Reinforcing Steel Bar, 12mmØ x 6.00m @ Grade 40	1,273.39	kgs.	
4	Reinforcing Steel Bar, 10mmØ x 6.00m @ Grade 33	761.38	kgs.	
5	Tie Wire, G.I., Gauge 16	35.75	kgs.	
	Sub-Total V			
VI.	MASONRY WORKS			
A.	CHB Wall			
1	6" Concrete Hollow Block, NLB	1,488.00	pcs.	
2	4" Concrete Hollow Block, NLB	4,062.00	pcs.	

3	Reinforcing Steel Bar, 10mmØ 6.00m @ Grade 33	1,241.86	kgs.	
4	Tie Wire, G.I., Gauge 16	33.26	kgs.	
B.	Cement Mortar (Class C - 1:4 Mix) - 6" CHB			
1	Portland Cement, 40kg	182.00	bags	
2	Washed Sand	10.05	cu.m	
C.	Cement Mortar (Class C - 1:4 Mix) - 4" CHB			
1	Portland Cement, 40kg	170.00	bags	
2	Washed Sand	14.13	cu.m	
D.	Plastering (Class B - 1:3 Mix, t = 25mm) - 6" CHB			
1	Portland Cement, 40kg	58.00	bags	
2	Vibro Sand	4.76	cu.m	
E.	Plastering (Class B - 1:3 Mix, t = 25mm) - 4" CHB			
1	Portland Cement, 40kg	156.00	bags	
2	Vibro Sand	13.00	cu.m	
	Sub-Total VI			
VII.	DOORS AND WINDOWS			
A.	<i>Supply and Installation of the Doors including Jamb and all necessary accessories and consumables for NEW CHB WALLS</i>			

1	D1 - 12mm Thk. Tempered Glass Powder Coated Aluminium Framed Double Door (2.1mH x 0.9mW, 2 Panels) with vertical awning windows (0.45mH x 0.40mW) including lever type stainless door knob & deadbolt, heavy duty pivot hinges, complete locking devices and floor door locks and all necessary consumables and accessories (1 set)	67.81	sq.ft	
2	D2 - 12mm Thk. Tempered Glass Powder Coated Aluminium Framed Double Door (2.1mH x 0.9mW, 2 Panels) including lever type stainless door knob & deadbolt, heavy duty pivot hinges, complete locking devices and floor door locks and all necessary consumables and accessories (1 set)	40.69	sq.ft	
3	D3 - 50mm thick powder coated steel door 180° swing (2.10mH x 0.90mW) including steel jamb, lever type door knobs & deadbolt, 180° heavy duty hinges and all necessary consumables and accessories (1 set)	20.34	sq.ft	
4	D4 - 50mm thick powder coated steel door 90° swing (2.10mH x 0.90mW) including steel jamb, lever type door knobs & deadbolt, 90° heavy duty hinges and all necessary consumables and accessories (1 set)	20.34	sq.ft	
5	D5 - Four (4) panel bi-fold powder coated steel louver door (2.10mH x 2.50mW) including lever type door knobs, deadbolt, heavy duty hinges, surface bolt and all necessary consumables and accessories (1 set)	56.51	sq.ft	

6	D6 - 50mm thick powder coated steel louver door (2.10mH x 0.60mW) including steel jamb, lever type door knobs & deadbolt, heavy duty hinges and all necessary consumables and accessories (2 sets)	27.13	sq.ft	
7	D7 - 50mm thick hollow wooden flush door (2.10mH x 0.90mW) including wooden jamb, lever type door knobs, butt hinges and all necessary consumables and accessories (7 sets)	142.41	sq.ft	
8	D8 - 50mm thick hollow wooden flush door (2.10mH x 0.80mW) including wooden jamb, lever type door knobs, butt hinges and all necessary consumables and accessories (6 sets)	108.50	sq.ft	
9	D9 - 50mm thick hollow wooden flush door (2.10mH x 0.60mW) including wooden jamb, lever type door knobs, butt hinges and all necessary consumables and accessories (2 sets)	27.13	sq.ft	
10	D10 - PVC door w/ louver (2.10mH x 0.6mW) including jamb, lever type door knob, butt hinges, louver and all necessary consumables and accessories (8 sets)	108.50	sq.ft	
11	D11 - PVC door w/ kick plate (2.10mH x 0.9mW) including jamb, lever type door knob, butt hinges, kick plate and all necessary consumables and accessories (4 sets)	81.38	sq.ft	
12	D12 - 50mm thick fire rated steel door (2.10mH x 0.9mW) including steel jamb, single lever lock, panic device, heavy duty butt hinges, self closing hardware all necessary consumables and accessories (3 sets)	61.03	sq.ft	

13	D13 - 50mm thick double swing hollow door (2.10mH x 1.80mW) w/ safety tempered glass, stretcher, and kick plate including pivot hinges, foot bolt and all necessary consumables and accessories (2 sets)	81.38	sq.ft	
14	D14 - 50mm thick double swing hollow door (2.10mH x 1.30mW) w/ safety tempered glass, stretcher, and kick plate including pivot hinges, foot bolt and all necessary consumables and accessories (4 sets)	117.54	sq.ft	
B.	<i>Supply and Installation of the Windows including frames and all necessary accessories and consumables</i>			
1	W1 - 6mm thk glass fixed and pass through sliding window combination on powder coated aluminium frame (1.2mH x 2.0mW) (16 set/s)	38.40	sq.m	
2	W2 - 6mm thk glass fixed and pass through sliding window combination on powder coated aluminium frame (1.2mH x 1.3mW) (3 set/s)	4.68	sq.m	
3	W3 - 6mm thk glass sliding window on powder coated aluminium frame (0.5mH x 1.15mW) (3 set/s)	1.73	sq.m	
4	W4 - 6mm thk glass sliding window on powder coated aluminium frame (0.5mH x 1.55mW) (3 set/s)	2.33	sq.m	
5	W5 - 6mm thk glass awning window on Powder Coated Aluminium frame (0.5mH x 1.7mW) (8 set/s)	6.80	sq.m	
6	W6 - 6mm thk glass awning window on Powder Coated Aluminium frame (0.5mH x 1.15mW) (3 set/s)	1.73	sq.m	

7	W7 - 6mm thk glass awning window on Powder Coated Aluminium frame (0.5mH x 0.60mW) (1 set/s)	0.30	sq.m	
8	W8 - 6mm thk glass awning window on Powder Coated Aluminium frame (1.2mH x 0.7mW) (1 set/s)	0.84	sq.m	
9	W9 - 6mm thk glass sliding/hung window on Powder Coated Aluminium frame (1.2mH x 0.7mW) (1 set/s)	0.77	sq.m	
10	W10 - 6mm thk glass awning window on Powder Coated Aluminium frame (1.85mH x 1.0mW) (1 set/s)	1.85	sq.m	
11	Aluminum Box Louvers bolted to masonry wall by expansion bolt (1.35mH x 2.1mW)(8set/s)	22.68	sq.m	
12	Aluminum Box Louvers bolted to masonry wall by expansion bolt (1.35mH x 1.4mW)(3set/s)	4.89	sq.m	
13	Window Steel Grills(1.24mH x 2.04mW)(8 set/s)	20.23	sq.m	
Sub-Total VII				
VIII.	STEEL WORKS			
	<i>including all necessary consumables and hardware</i>			
A.	Steel Truss			
1	Tubular Steel Bar 100mm x 100mm x 6mm thk	2.00	pcs	
2	C7x9.8	2.00	pcs	
3	C5x6.7	5.00	pcs	
4	C4x5.4	5.00	pcs	
5	250mm x 300mm x 16mm MS Plate	4.00	pcs	
6	230mm x 230mm x 12mm MS Plate	3.00	pcs	
7	200mm x 250mm x 16mm MS Plate	7.00	pcs	
8	200mm x 200mm x 16mm		pcs	

	MS Plate	4.00		
9	16mm dia mm x 300mm long A325 Bolts with 6mm Fins	72.00	pcs	
10	LC100mm x 50mm x 15mm x 1.2mm thk	36.00	pcs	
B.	Stainless Railings			
1	Stainless Grab Railings for PWD at Ground Floor comfort room (Fixed type 0.8Lm)	4.00	set	
2	Stainless Grab Railings for PWD at Ground Floor comfort room (Fixed type 1.6Lm)	2.00	set	
3	Stainless Grab Railings for PWD at Ground Floor comfort room (Hinged type 0.7Lm)	4.00	set	
4	Stainless Grab Railings for all Stairs	20.00	lm	
C.	Steel Stairs			
1	Refurbishing of Fire exit steel stairs at right side of the building	1.00	lot	
	Sub-Total VIII			
IX.	TINSMITHRY WORKS			
	<i>including all necessary consumables and hardware</i>			
1	0.6mm thk. 1.04m nominal width Preformed/prepainted G.I. ribbed type roofing; cold rolled steel substrate, commercial quality; oil free polyester paint, oven baked , GA 24,	110.00	sq.m.	
2	1.2mm thick Polycarbonate ribbed type roofing	26.00	sq.m.	
3	Tekscrew, Steel, No. 10 x 35mm	100.00	pcs.	
4	Prepainted, Wall capping / End Wall Flashing, Ga. 24 (0.5mm) 24" x 2440mm	21.00	pcs.	
5	Prepainted, Ridge Roll and Valley, Ga. 24 (0.5mm) 24"x 2440mm	2.00	pcs.	
6	10mm. Thick Double Sided		rolls	

	Insulation	2.50		
7	Tie Wire, G.I., Gauge 16	1.00	kgs.	
8	Blind Rivets, 3/16" x 1/2" (4-4)	150.00	pcs.	
9	Silicone Sealant, Clear Color	3.00	tubes	
10	Touch-up Paint	2.00	cans	
Sub-Total IX				
X.	CARPENTRY WORKS			
	<i>including all necessary consumables and hardware</i>			
A.	Ceiling Works			
1	Metal Furring, 12mm x 50mm x 5.0m	260.00	pcs.	
2	Carrying Channel, 19mm x 50mm x 5.0m	143.00	pcs.	
3	W-Clip	763.00	pcs.	
4	Wall angle, 1" x 1" x 3000mm	473.00	pcs.	
5	Threaded bolt w/ nut, 3/8"	382.00	pcs.	
6	Expansion Bolt, 3/8" x 2"	382.00	pcs.	
7	Blind Rivets, 1/8" x 3/8"	10.00	boxes	
8	6mm x 4' x 8' Fiber cement board	152.00	shts	
B.	Cabinetry Works			
1	3/4" x 4' x 8' thk marine plywood	57.00	sheets	
2	1/4" x 4' x 8' thk marine plywood	17.00	sheets	
3	2" x 4" x 10' s4s KD	8.00	pcs	
4	1" x 2" x 10' s4s KD	44.00	pcs	
5	1/2" x 1" x 10' s4s KD	172.00	pcs	
6	Handle drawer	3.00	pcs	
7	Track guide	6.00	pcs	
8	Handle door	100.00	pcs	

9	Soft Closed Concealed Hinges	203.00	pcs	
10	Swivel Caster Wheel	12.00	pcs	
11	Consumables (CWN, Finishing Nails, Wood Glue, etc)	1.00	lot	
Sub-Total X				
XI.	TILE WORKS			
	<i>including all necessary consumables and hardware</i>			
A.	Common Areas and Offices			
1	600mm x 600mm Natural Gray Glossy Granite Tiles on a 50mm thk. mortar bed (mortar mix 1:3)	966.00	pcs.	
B.	Comfort Rooms, Slop Sinks			
1	300mm x 300mm Unglazed tiles to include preparation on 50mm thk. mortar bed (mortar mix 1:3)	462.00	pcs.	
2	300mm x 300mm Glazed tiles to include preparation on 50mm thk. mortar bed (mortar mix 1:3)	1,859.00	pcs.	
C.	Counter Table			
1	600mm x 600mm Natural Gray Glossy Porcelain Tiles on a 50mm thk. mortar bed (mortar mix 1:3)	70.00	pcs.	
D.	FF-3			
1	2mm Antibacterial Hospital Vinyl Flooring Homogeneous Floor PVC Roll Flooring	61.74	sqm	
E.	FF-5			
1	600mm x 600mm Vinyl Tiles	20.00	pcs.	
F.	Stairs			
1	600mm x 600mm Natural Gray Unglazed Porcelain Tiles on a 50mm thk. mortar bed (mortar mix 1:3)	49.00	pcs.	

G.	Other Materials			
1	Tile Adhesive, 25kg / bag	182.00	bags	
2	Tile Grout, 25kg	152.00	bags	
3	15mm x 44mm Anodised Bull Nose Stair Tread	10.00	pcs.	
4	Tile Trim (wall edging)	21.00	pcs.	
5	Tile Trim (above tiles)	27.00	pcs.	
6	Portland Cement, 40 kgs	5.00	bags	
7	Wash Sand	0.40	cu.m.	
8	Rugby	4.00	lit	
	Sub-Total XI			
XII.	PAINTING WORKS			
	<i>interior (wall, ceiling and stairs) and exterior including all necessary consumables and hardware</i>			
1	Flat Latex	200.00	gals.	
2	Semi Gloss Latex	220.00	gals.	
3	Masonry Putty	60.00	gals.	
4	Masonry Neutralizer	20.00	gals.	
5	Flatwall Enamel	15.00	gals.	
6	Quick Drying Enamel	20.00	gals.	
7	Red Oxide Primer	25.00	gals.	
8	Glazing Putty	10.00	gals.	
8	Topcoat for roof	170.00	gals.	
9	Paint Thinner	20.00	gals.	
10	Roller Brush 7"	20.00	pcs.	
11	Baby Roller	20.00	pcs.	
12	Paint Brush 3"	8.00	pcs.	

13	Paint Brush 2"	8.00	pcs.	
14	Paint Brush 1"	8.00	pcs.	
15	Sandpaper, #100	1.00	rolls	
16	Sandpaper, #240	1.00	roll	
17	Sandpaper, #220	1.00	roll	
18	Newspaper	2.00	kgs.	
19	Rags	5.00	kgs.	
20	Masking Tape	10.00	rolls	
Sub-Total XII				
XIII.	PLUMBING WORKS			
	<i>including all necessary consumables and hardware</i>			
A.	Drain, Waste & Vent (DWV) Pipes			
1	PVC Pipe, Sanitary, 4"Ø x 3.0m	19.00	pcs.	
2	PVC Pipe, Sanitary, 2"Ø x 3.0m	8.00	pcs.	
3	PVC Sanitary Wye, 4"Ø x 4"Ø	3.00	pcs.	
4	PVC Sanitary Wye, 2"Ø x 2"Ø	20.00	pcs.	
7	PVC Sanitary Tee, 4"Ø x 2"Ø	19.00	pcs.	
10	PVC Bend, 1/8 x 2"Ø	4.00	pcs.	
12	PVC Bend, 1/4 x 2"Ø	19.00	pcs.	
15	PVC Cleanout with Cover. 4"Ø	9.00	pcs.	
17	PVC P-Trap, Sanitary, 2"Ø	24.00	pcs.	
18	Air Accumulating Vent, 2"Ø	31.00	pcs.	
19	Solvent Cement, 400cc	10.00	cans	
B.	Cold Water Line (CWL)			
1	PPR, 3/4"Ø x 4.0m	31.00	pcs.	

2	PPR, Equal Tee, 3/4"Ø	37.00	pcs.	
3	PPR, Union, 3/4"Ø	17.00	pcs.	
4	PPR, Cross Tee, 3/4"Ø	2.00	pcs.	
5	PPR, Coupling, 3/4"Ø	10.00	pcs.	
6	PPR, 1/2"Ø x 4.0m	17.00	pcs.	
7	PPR, Equal Tee, 3/4"Ø	3.00	pcs.	
8	PPR, Elbow, 90°, 3/4"Ø	78.00	pcs.	
9	<i>PPR, Female Adapter, 1/2"Ø</i>	39.00	pcs.	
10	Gate Valve, 3/4"Ø	15.00	pcs.	
11	Flexible Hose, 3/4" to 1/2"Ø	21.00	pcs.	
12	Angle Valve, 3/4"Ø x 1/2"Ø	18.00	pcs.	
13	PPR Fusion Machine	1.00	set	
14	Teflon Tape	20.00	pcs.	
C.	Mop Sink			
1	4" Concrete Hollow Blocks	12.00	pcs.	
2	Reinforcing Steel Bar, 10mmØ x 6.00m @ Grade 33	1.00	pcs.	
5	Washed Sand	0.60	cu.m.	
6	Portland Cement, 40kgs	1.00	bags	
7	Tie wire, G.I., Gauge 16	1.00	kgs.	
D.	Plumbing Fixtures & Appurtenances			
1	Water Closet, Tank Type Dual Flush ceramic water closet including bidet hose complete with dual valve, flexible hose, fittings and all other accessories and consumables	8.00	sets	

2	Wall Hung Lavatory complete w/ counter mounted stainless steel faucet, hardware, fittings & accessories (Prenatal, Pwd and Common Toilet)	9.00	sets	
3	Small Wall Hung Lavatory complete w/ counter mounted stainless steel faucet, hardware, fittings & accessories (Prenatal, Pwd and Common Toilet)	1.00	sets	
4	Top Inlet, Wall Mounted Urinal with Brass Flush Valve Push Button type and Brass Urinal Flange with Bolts and Rubber Washer	2.00	set	
5	Stainless Steel Wall-mount Tissue Holder	3.00	pcs	
6	Stainless Steel Wall-mount Shower Curtain Rod	3.00	pcs	
7	Stainless Steel Wall-mount Soap Dish	3.00	pcs	
8	Stainless Steel Wall-mount Towel Rack	3.00	pcs	
9	60cm x 90cm Frameless Wall-mount Mirror including Mounting Clips	3.00	pcs	
10	Stainless Steel (600mm x 400mm) Undermount Sink complete w/ counter mounted stainless steel gooseneck faucet, hardware, fittings & accessories	4.00	sets	
11	Stainless Steel (480mm x 400mm) Undermount Sink complete w/ counter mounted stainless steel gooseneck faucet, hardware, fittings & accessories	3.00	sets	
12	Stainless Steel (600mm x 600mm) Undermount Sink complete w/ counter mounted stainless steel gooseneck faucet, hardware, fittings & accessories	2.00	sets	
13	Stainless Steel Wall Mounted Lever Type Handle Hosebibb Faucet	8.00	set	

14	Floor Drains (100mm x 100mm, Brass) w/ brass plug w/ spanner wrench socket, cast iron connector, fittings, & accessories	11.00	pcs.	
15	Stainless wall shower head	3.00	pcs.	
Sub-Total XIII				
XIII.	ELECTRICAL WORKS			
	<i>including all necessary consumables and hardware</i>			
A.	Panel Boards and Breakers			
1	Panel Board Enclosure NEMA 3R Bolt on Circuit Breaker Single Phase	2.00	pcs.	
2	Panel Board Enclosure 2 Branches Single Phase	1.00	pcs.	
3	Panel Board Enclosure 4 Branches Single Phase	2.00	pcs.	
4	Panel Board Enclosure 8 Branches Single Phase	2.00	pcs.	
5	Manual Transfer Switch Single Phase, Double Throw 100AT	2.00	pcs.	
6	150 Amp. Breaker, Single Phase	2.00	pcs.	
7	125 Amp. Breaker, Single Phase	1.00	pcs.	
8	100 Amp. Breaker, Single Phase	1.00	pcs.	
9	80 Amp. Breaker, Single Phase	3.00	pcs.	
10	70 Amp. Breaker, Single Phase	4.00	pcs.	
11	60 Amp. Breaker, Single Phase	2.00	pcs.	
12	30 Amp. Breaker, Single Phase	9.00	pcs.	
13	20 Amp. Breaker, Single Phase	15.00	pcs.	
B.	Copper Wires and Cables			
1	THHN wire No.1 (Stranded - 38mm ²)	31.00	meter	
2	THHN wire No. 4 (Stranded - 22mm ²)	62.00	meter	

3	THHN wire No. 6 (Stranded - 14mm ²)	24.00	meter	
4	THHN wire No. 8 (Stranded - 8.0mm ²)	75.00	meter	
5	THHN wire No. 10 (Stranded - 5.5mm ²)	2.00	boxes	
6	THHN wire No. 12 (Stranded - 3.5mm ²)	13.00	boxes	
7	THHN wire No. 14 (Stranded - 2.0mm ²)	5.00	boxes	
C.	PVC Pipe, Metal Pipe			
1	PVC Pipe 3/4"Ø (20mmØ)	405.00	pcs.	
2	EMT Pipe 1"Ø (25mmØ)	7.00	pcs.	
3	EMT Pipe 1 1/4"Ø (32mmØ)	5.00	pcs.	
4	EMT Pipe 1 3/4"Ø (40mmØ)	9.00	pcs.	
D.	Lighting Fixtures			
1	1200MM" T8 LED Tube Light 18W White Light & T8 Housing Bracket Fixture	10.00	pcs.	
1	6" Ø Pinlight Housing Recessed Beehive	34.00	pcs.	
2	20W LED Bulb Day Light	34.00	pcs.	
3	Ceiling Receptacle 4 1/4" Diameter with Screw E-27 Bulb Socket Receptacle	83.00	pcs.	
4	32W Circular LED Tube Day Light	83.00	pcs.	
5	Emergency Lights	34.00	pcs.	
E.	Aircon Units			
	including all necessary consumables, hardware materials and its bracket support (With "DOH-MMCHD HFEP"(Government Property not for sale) sticker in each unit)			
1	1.0 HP Dual Inverter Airconditioner Split type	3.00	unit	
2	2.0 HP Dual Inverter Airconditioner Split Type	3.00	unit	

3	3.0 HP Dual Inverter Airconditioner Split Type	2.00	unit	
F.	Devices, Accessories and Consumables			
1	PVC Male adapter with Lock nut 3/4"Ø (20mmØ)	800.00	pcs.	
2	EMT Conduit fitting 1"Ø (25mmØ)	14.00	pcs.	
3	EMT Conduit fitting 1 1/4"Ø (32mmØ)	10.00	pcs.	
4	EMT Conduit fitting 1 3/4"Ø (40mmØ)	18.00	pcs.	
5	Service Breaker w/ Outlet (30A)	8.00	pcs.	
6	Ceiling Mounted Exhaust Fan	10.00	pcs.	
7	One Gang Outlet w/ Plate	35.00	pcs.	
8	Double Gang Floor Outlet	4.00	pcs.	
9	Double Gang Outlet w/ Plate	81.00	pcs.	
10	Three Switch w/ Plate	3.00	pcs.	
11	Double Switch w/ Plate	29.00	pcs.	
12	Single Switch w/ Plate	11.00	pcs.	
13	2 way Single Switch w/ Plate	4.00	pcs.	
14	Junction Box	46.00	pcs.	
15	Utility Box	163.00	pcs.	
16	Electrical Tape (big)	15.00	pcs.	
17	Cable Tie 3x150mm	20.00	pack	
	Sub-Total XIV			

GRAND TOTAL

SUMMARY:

I	GENERAL REQUIREMENTS	-
II	PRE CONSTRUCTION WORKS	

		-
III	CONCRETE WORKS	-
IV	FORMWORKS	-
V	STEEL REINFORCEMENTS	-
VI	MASONRY WORKS	-
VII	DOORS AND WINDOWS	-
VII	STEEL WORKS	-
IX.	TINSMITHRY WORKS	-
X	CARPENTRY WORKS	-
XI	TILE WORKS	-
XII	PAINTING WORKS	-
XIII	PLUMBING WORKS	-
XIV	ELECTRICAL WORKS	-
TOTAL PROJECT COST (I+II+III+IV+V+VI+VII+VIII+IX+X+XI+XII+ XIII+XIV)		-

Section IX. Checklist of Technical and Financial Documents

Notes on the Checklist of Technical and Financial Documents

The prescribed documents in the checklist are mandatory to be submitted in the Bid, but shall be subject to the following:

- a. GPPB Resolution No. 09-2020 on the efficient procurement measures during a State of Calamity or other similar issuances that shall allow the use of alternate documents in lieu of the mandated requirements; or
- b. any subsequent GPPB issuances adjusting the documentary requirements after the effectivity of the adoption of the PBDs.

The BAC shall be checking the submitted documents of each Bidder against this checklist to ascertain if they are all present, using a non-discretionary “pass/fail” criterion pursuant to Section 30 of the 2016 revised IRR of RA No. 9184.

Checklist of Technical and Financial Documents

I. TECHNICAL COMPONENT ENVELOPE

Class “A” Documents

Legal Documents

- (a) Valid PhilGEPS Registration Certificate (Platinum Membership) (all pages) in accordance with Section 8.5.2 of the IRR;

Technical Documents

- (b) Statement of the prospective bidder of all its ongoing government and private contracts, including contracts awarded but not yet started, if any, whether similar or not similar in nature and complexity to the contract to be bid; **and**
- (c) Statement of the bidder’s Single Largest Completed Contract (SLCC) similar to the contract to be bid, except under conditions provided under the rules; **and**
- (d) Special PCAB License in case of Joint Ventures **and** registration for the type and cost of the contract to be bid; **and**
- (e) Original copy of Bid Security. If in the form of a Surety Bond, submit also a certification issued by the Insurance Commission **or** original copy of Notarized Bid Securing Declaration; **and**
- (f) Project Requirements, which shall include the following:
- a. Organizational chart for the contract to be bid;
 - b. List of contractor’s key personnel (*e.g.*, Project Manager, Project Engineers, Materials Engineers, and Foremen), to be assigned to the contract to be bid, with their complete qualification and experience data;
 - c. List of contractor’s major equipment units, which are owned, leased, and/or under purchase agreements, supported by proof of ownership or certification of availability of equipment from the equipment lessor/vendor for the duration of the project, as the case may be; **and**
- (g) Original duly signed Omnibus Sworn Statement (OSS) **and** if applicable, Original Notarized Secretary’s Certificate in case of a corporation, partnership, or cooperative; or Original Special Power of Attorney of all members of the joint venture giving full power and authority to its officer to sign the OSS and do acts to represent the Bidder.

Financial Documents

- (h) The prospective bidder’s computation of Net Financial Contracting Capacity (NFCC).

Class “B” Documents

- (i) If applicable, duly signed joint venture agreement (JVA) in accordance with RA No. 4566 and its IRR in case the joint venture is already in existence **or** duly notarized statements from all the potential joint venture partners stating that they will enter into and abide by the provisions of the JVA in the instance that the bid is successful.

II. FINANCIAL COMPONENT ENVELOPE

- (j) Original of duly signed and accomplished Financial Bid Form; **and**

Other documentary requirements under RA No. 9184

- (k) Original of duly signed Bid Prices in the Bill of Quantities; **and**
- (l) Duly accomplished Detailed Estimates Form, including a summary sheet indicating the unit prices of construction materials, labor rates, and equipment rentals used in coming up with the Bid; **and**
- (m) Cash Flow by Quarter.

